

PMMA Roof Systems

Liquid-Applied Roof Membrane Solutions



With you every step of the way

[Siplast.com](https://www.siplast.com)



With you every step of the way

CANADA
19748 86 Ave.
Unit 155
Langley, BC
Canada V2Y 1Z5
1.877.233.2338

UNITED STATES
14911 Quorum Dr.
Suite 600
Dallas, TX 75254
469.995.2200

©2025 SIPLAST • SIPPM024-0425

Proven performance and protection

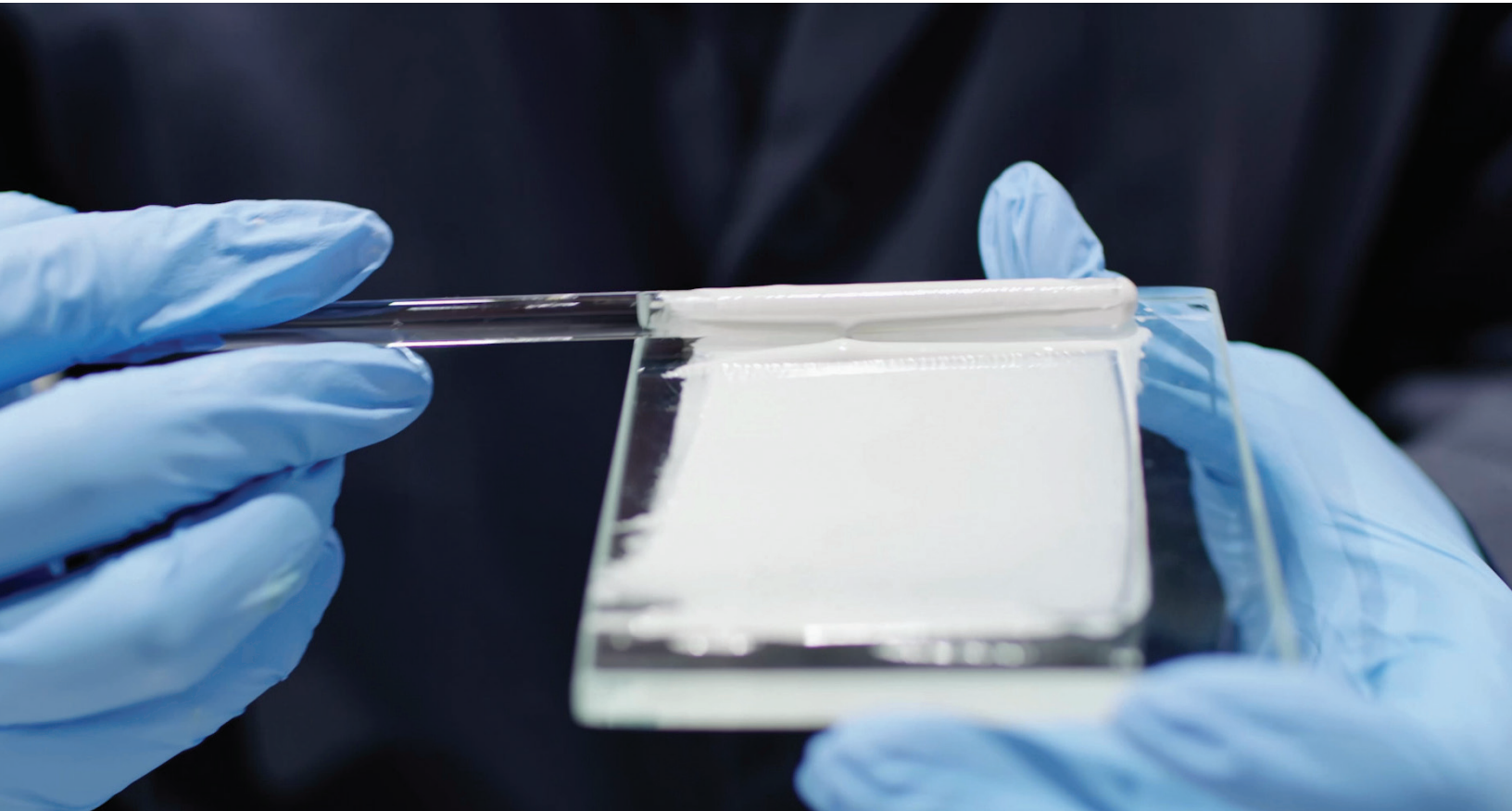
Siplast Parapro® PMMA Liquid-Applied Systems

Today’s builders are under intense pressure to keep job schedules on track and eliminate callbacks. Fortunately, Siplast Parapro® and Paracoat® PMMA Liquid-Applied Systems are formulated to make installations fast and ensure waterproofing protection that lasts.

Featuring significantly faster cure times than many other polyester and polyurethane systems, Siplast PMMA Systems offer a range of performance advantages to help you meet your project’s toughest challenges.

- Ultra-fast cure time
- Low VOC
- Extreme durability
- Water/UV-resistant
- Heat-resistant
- Seamless coverage
- Withstands ponding water
- Provides protection against foot traffic*

* Siplast warranties and guarantees do not provide coverage against traffic. Refer to siplast.com for more information on warranty and guarantee coverage and restrictions.



Formulated for a wide range of applications

First synthesized in the 1930s, polymethyl methacrylate (PMMA) soon found uses in everything from aircraft windshields to dentures. In the 1970s, a more flexible PMMA formulation for coatings was developed for waterproofing.

Today, Siplast PMMA Systems deliver exceptional durability and versatility for several roofing and flashing applications.

- Roofing
- Vegetated roofs
- Roof drains and penetrations
- Transitions
- Around HVAC equipment and other rooftop equipment



Siplast also offers PMMA solutions for waterproofing applications with its Terapro Systems.

Parapro® Roof Membrane System

The Parapro® Roof Membrane System is a seamless, fully reinforced, layered application consisting of a substrate-specific primer and a waterproofing membrane combining two resin waterproofing coats and polyester fleece fabric. The system forms a seamless, 90 mil monolithic membrane that supports fast installation on complex geometries and multiple penetrations, and offers greater inter-layer bond strength and durability against dynamic/static loads vs. polyester and polyurethane products. Parapro® can be surfaced with aggregate, and is available in light gray, white, and optional color finishes.



Use our **Parapro® Roof Membrane Estimating Guide** to estimate the amount of product you'll need, including waste factor estimation tools.

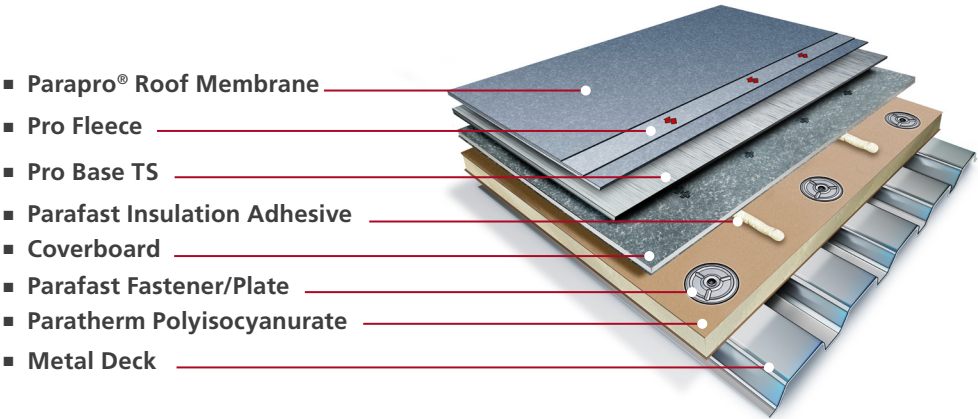
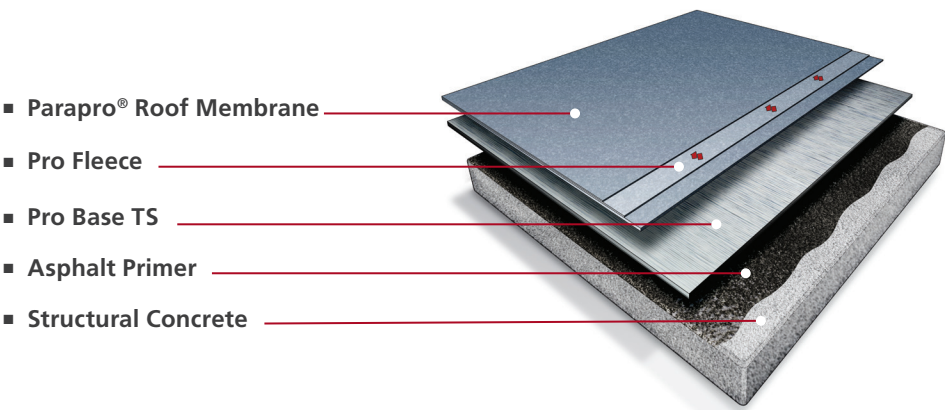


- **Ultra-fast cure time:** Rain-ready in 30 minutes and ready for foot traffic in two hours*, minimizing job site delays.
- **Chemical-resistant:** Engineered to withstand corrosive HVAC cleaning products, plus oils, greases, and fats.**
- **Versatile application:** Wide application temperatures — from 23°F to 104°F — helps keep projects on schedule.
- **Durability:** Resists the natural wear and tear associated with moisture, and heat- and cold-driven expansion and contraction.



*Typical set/cure time at 68°F (20°C).
**Siplast warranties and guarantees do not provide coverage against exposure to chemicals. Refer to siplast.com for more information on warranty and guarantee coverage and restrictions.

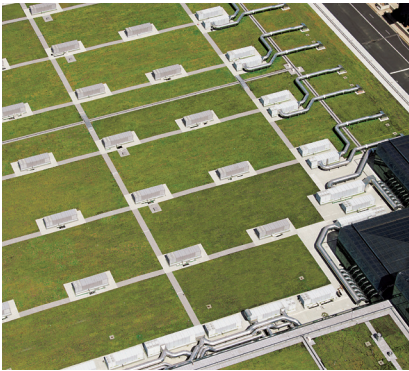
Parapro® Roof Membrane Assemblies



For more information on these products, refer to Parapro® Accessories chart on the final page.

NEW YORK Jacob K. Javits Convention Center

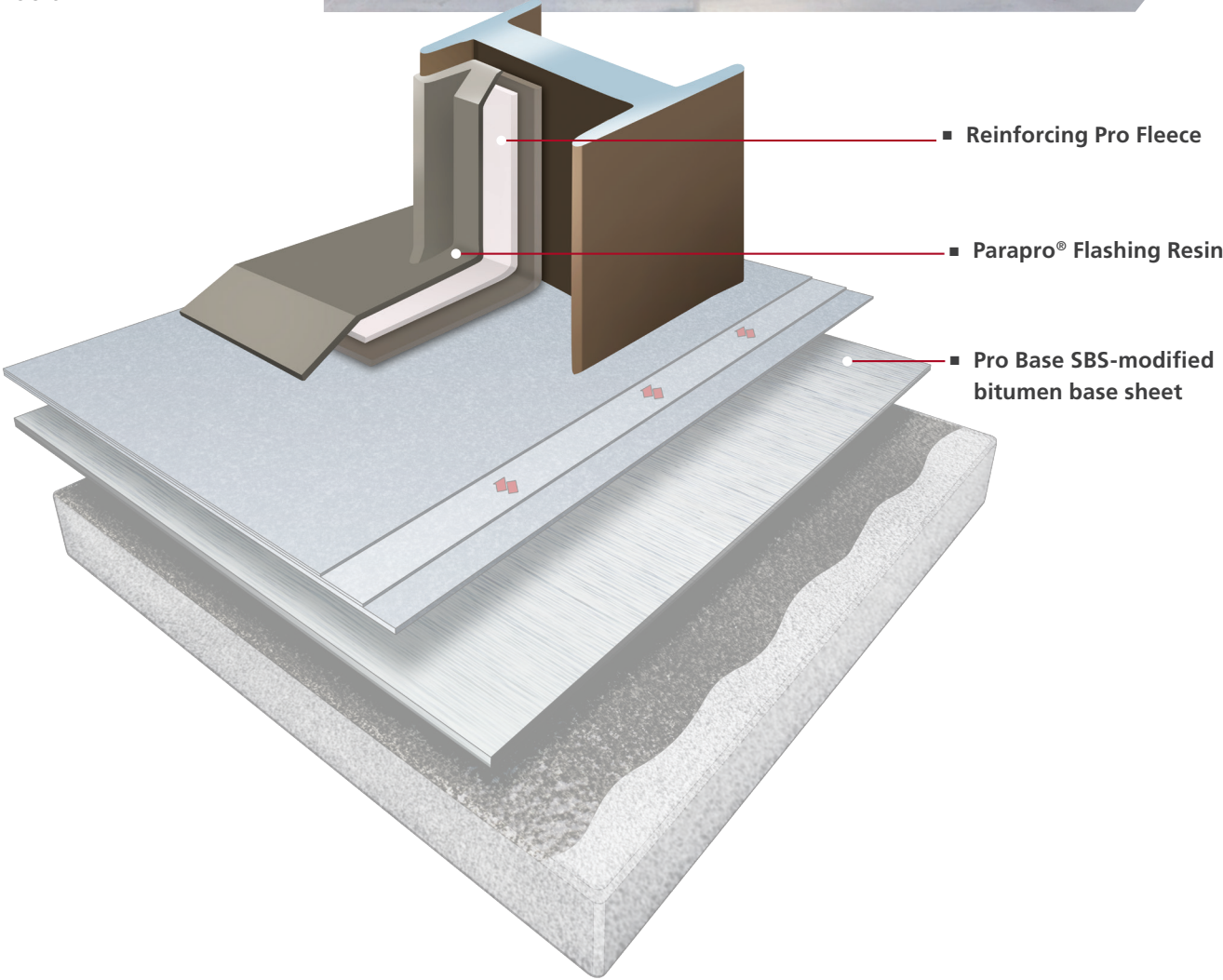
The busy Jacob K. Javits Convention Center in New York City was in need of a multi-faceted reroofing solution. The project's goals included addressing existing leaks and helping realize the client's vision of becoming a role model for environmental leadership to the exhibition industry globally.



Parapro® Flashing

Parapro® Flashing is a layered application consisting of two coats of catalyzed, thixotropic PMMA resin encapsulating a layer of polyester fleece. Engineered to adhere to many common construction materials — plastics, concrete, steel, and more — the finished application is fully reinforced and seamless, making it an ideal solution for a range of difficult flashing applications:

- Equipment supports
- Unusual penetrations
- I-beams
- H-beams
- Stanchions
- Conduit



Accessory	Description	Packaging	
Pro Color Finish	A pigmented, high-performance, multi-component, fast-curing PMMA resin; available in 16 standard colors, including gray (4 shades), beige, tan, teak, brown, terracotta, red (2 shades), green, blue, black, white, and yellow	10 kg pail	
Pro Catalyst Powder	White granular powder that is a reactive agent for use in initiating polymerization and curing of Parapro resins	Vented box containing 10 premeasured 0.1 kg (3.2 oz.) plastic bags (1 kg total)	
Pro Catalyst Liquid	Reactive agent used to induce curing of Parapro®, Terapro, and Pro resins	Plastic container with a collapsible silicone measuring cup and a plastic tablespoon (available in two sizes)	
Pro Fleece	Non-woven, needle-punched polyester fabric reinforcement	12 in. x 82 ft. (305 mm x 25 m) 12 in. x 164 ft. (305 mm x 50 m) 25 in. x 164 ft. (630 mm x 50 m) 41 in. x 164 ft. (1050 mm x 50 m)	
Pro Prep	Clear, blended solvent used to clean the transition areas of in-place Parapro® and Terapro applications at tie-ins, repairs, and between staged coats of resin	1 gal. (3.8 L) 5 gal. (19 L)	
Pro Natural Quartz	Natural-colored, high-purity silica aggregate that is washed, kiln-dried, and suitable for broadcast	22.7 kg (50 lb.) bag	
Pro Texture Beads	Hardened, spherical soda-lime glass beads that can be broadcast into wearing layer of Parapro® applications to help provide skid resistance	5 kg (11 lb.) pails	
Pro Base	A lightweight random fibrous glass mat impregnated and coated with high-quality SBS-modified bitumen	Roll Length: 50 ft. (15.24 m) Roll Width: 3.28 ft. (1.0 m)	
Pro Matrix Resin	Fibrated PMMA based resin	10 kg (22 lb.) drum	
Pro Mortar	A two-component PMMA resin-based mortar	Part A: 8.25 kg. (18.2 lb.) pail Pro Mortar Aggregate Part B: 50 kg (110.4 lb.) bag (2 bags @ 25 kg each)	
Pro Paste Resin	A pebble gray, high-performance, multi-component, fast-curing PMMA resin paste	10 kg (22 lb.) drum	
Paracoat PMMA Roof Coating	High-performance, multi-component, fast-curing, and flexible PMMA roof coating resin	20 kg (45 lb.) drum	



With you every step of the way

Siplast, a leader in roofing, waterproofing, and building enclosure solutions, is working to solve your toughest challenges. Through trusted partnerships and innovative solutions, Siplast has protected facilities across North America for over 40 years. For more information, visit siplast.com.



For more about how Siplast is meeting modern building enclosure demands, visit siplast.com