

# Single-Source Vegetated Roof Program



 **siplast**®

ZinCo  
**Z**



# Our collaboration simplifies your green roof project

Siplast and ZinCo Canada have teamed up to provide integrated Vegetated Roof Solutions exclusively for the Canadian market. This joint collaboration between two best-in-class providers allows you to specify Siplast membranes and ZinCo vegetated roof components, covered under one single-source guarantee.

**Siplast and ZinCo Single-Source Vegetated Roof Program** features a combined offering of waterproofing membranes and overburden solutions that can be customized to help meet your project's unique design, performance, and sustainability goals.

This collaboration provides you with fully-compatible vegetated roofing assemblies that come with comprehensive coverage, including membrane guarantees, material warranties, and overburden addendums. Siplast membranes and ZinCo overburden offerings are all combined under a single guarantee, issued through Siplast, to simplify the process for the building owner.

The Single-Source Vegetated Roof Program also offers design guidance, including product selection, detailing, and technical support that can include wind design and stormwater management calculations.

Contact us to get the conversation started on your next project.



Siplast



ZinCo





## With you every step of the way

Since first developing SBS-modified asphalt for roofing applications more than half a century ago, Siplast, a Standard Industries company, has consistently demonstrated a commitment to innovation, quality, and customer service. Our high-performance commercial roofing and waterproofing materials protect unique, iconic structures across North America.



## Green roofing Canada from coast to coast

ZinCo Canada is a leading provider of green roofing systems, specializing in Intensive Roof Gardens and sustainable building solutions. Their team brings extensive experience and expertise to the Canadian market, driven by a passion for eco-friendly urban development. ZinCo Canada distinguishes itself through its commitment to excellence, innovation, and customer satisfaction, combining the global reputation of the ZinCo brand with local expertise to deliver tailored solutions to the Canadian market.





# Siplast waterproofing systems

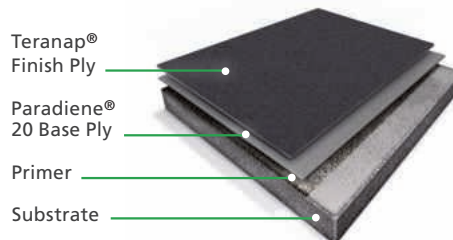
The high-performance protection you've come to expect from Siplast membrane systems can now be seamlessly integrated with engineered overburden solutions to ensure compatibility with comprehensive coverage.

**Siplast Teranap®** is a robust, two-ply SBS-modified bitumen waterproofing ply designed for use in homogeneous waterproofing membrane applications. Teranap® consists of a nonwoven polyester mat impregnated and coated with high-quality SBS-modified bitumen and a sheet surface protected by mineral or ceramic granules.

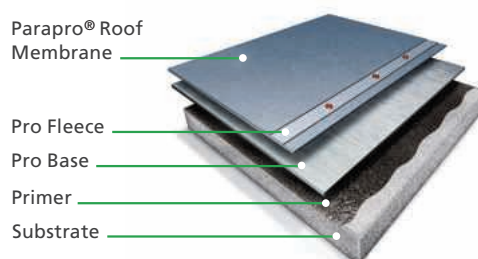
**Parapro® Roof Membrane Resin**, when catalyzed, combines with polyester fleece to form a monolithic, reinforced waterproofing membrane for roofing applications. Parapro® Flashing Resin may also be utilized with Siplast SBS-modified bitumen and PA-750 systems to help provide robust detail solutions.

**Siplast PA-750 Hot-Applied Rubberized Asphalt** delivers a fast-setting, fully adhered, reinforced, continuous membrane for waterproofing decks and other buried membrane applications.

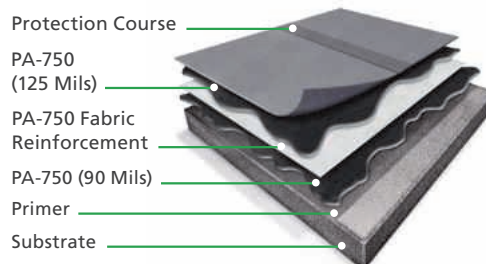
## Teranap® SBS-Modified Bitumen



## Parapro® Waterproofing over Pro Base



## PA-750 Hot-Applied Rubberized Asphalt



SBS-Modified Bitumen



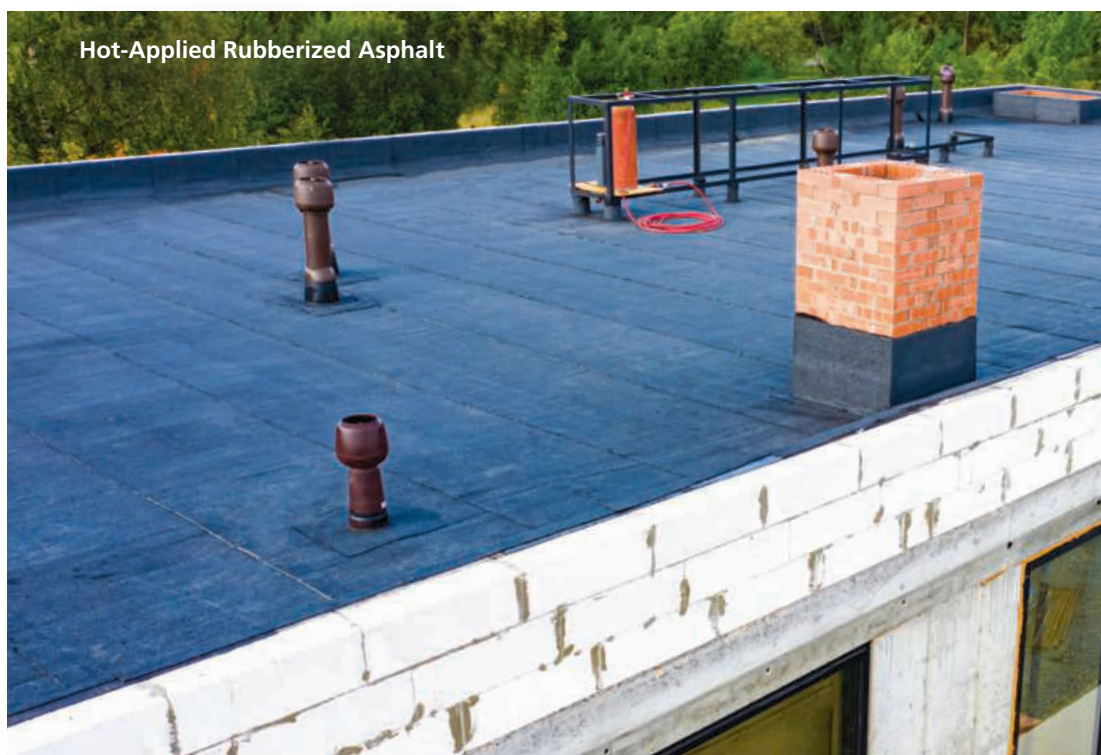
Parapro® Waterproofing



	<b>Teranap® SBS-Modified Bitumen</b>	<b>Parapro® Waterproofing over Pro Base</b>	<b>PA-750 Hot-Applied Rubberized Asphalt</b>
<b>Appearance</b>	Multi-layer SBS-modified bitumen waterproofing membrane system	Multi-component PMMA reinforced monolithic waterproofing membrane system	Hot-applied rubberized reinforced monolithic waterproofing membrane system
<b>Surface Prep</b>	Minimal	Minimal	Structural concrete: CSP 3-5 or light broom finish. Surface prep may be required on reroof.
<b>Relative Ease of Installation</b>	Easy	Moderate	Moderate
<b>Maximum Exposure Time Before Application of Finish Coat</b>	10 weeks	Indefinite	30 days
<b>Durability During Construction*</b>	Moderate	Strong	Soft
<b>Flashing Options</b>	Unexposed/Protected: Teranap® or Sand UV Exposed: Veral Aluminum, granule surface flashing sheet, or Parapro® Flashing System	Parapro® Flashing System	Veral Aluminum, granule-surface flashing sheet, or Parapro® Flashing System
<b>Install Directly onto LWIC?</b>	Yes — Siplast Insulcel RT System w/ torch-applied Paradiene 20 TS Base Ply only	Yes — Siplast Insulcel RT System w/ torch-applied Pro Base TS Base Ply only	No
<b>Suitable for Zero-Slope Application</b>	Yes	Yes	Yes
<b>Max Guarantee Term†</b>	Up to 30 years	Up to 30 years	Up to 20 years
<b>Relative Cost</b>	\$\$	\$\$\$	\$

\* Siplast does not provide coverage for traffic or other physical impacts. Refer to sample guarantees and warranties available at [siplast.com](http://siplast.com), for complete coverage and restrictions.

† For qualified systems only. Additional requirements apply. Contact Siplast for more information. Refer to the sample guarantees, available at [siplast.com](http://siplast.com), for complete coverage and restrictions.



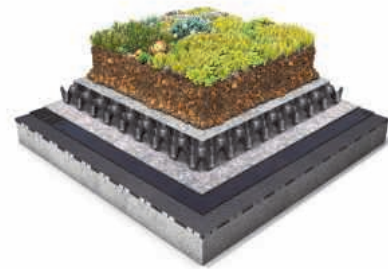
**Hot-Applied Rubberized Asphalt**



# ZinCo systems

## Extensive (FD-25)

ZinCo Extensive green roof systems are lightweight and low-maintenance, with growing media depths ranging from 60–120 mm. These assemblies are ideal for projects with limited structural load capacity and can be customized to help meet specific weight or spatial constraints. Planting options include pre-vegetated sedum mats, sedum plugs, or low-growing perennial plugs, offering flexible design choices for biodiversity and aesthetics.



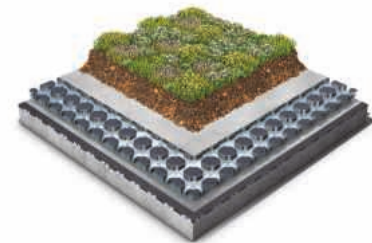
## Intensive (FD-60)

ZinCo Intensive green roof systems are designed for high-performance landscapes with growing media depths exceeding 200 mm. These systems can accommodate a broad palette of vegetation — from sod and herbaceous plants to shrubs and mature trees. Intensive green roofs are typically used in amenity spaces, rooftop gardens, and large commercial podiums where landscape function and user experience are key priorities.



## Stormwater Management (RS-60 or RSX Series)

ZinCo Blue Roof systems combine retention and detention strategies to manage stormwater directly on the roof. These assemblies are capable of transforming vegetated or hardscaped rooftops into functional stormwater management systems, helping to reduce peak flow and delay runoff. Suitable for both zero- and low-slope applications, RS-60 and RSX systems support integrated stormwater solutions without compromising design or use.





## Green Roof and Solar (GRPV)

ZinCo Green Roof and Solar (GRPV) systems integrate vegetation and photovoltaic technology to maximize both environmental and energy performance. These systems accommodate a range of solar panel orientations — including south-facing, east-west, and vertical configurations — while using the green roof assembly as ballast, eliminating the need for roof penetrations. The vegetation layer helps enhance panel efficiency by cooling the surrounding environment during peak summer heat, while the solar modules offer partial shading to the plants, supporting healthy growth in high-exposure areas.



### Guarantee Offerings\*

Membrane	Term	Description/Notes
Teranap® and Parapro®	Up to 30 years	<ul style="list-style-type: none"> <li>- Siplast guarantees the membrane will be free of leaks due to manufacturing defects or installation deficiencies. Siplast will repair leaks at its own expense without proration or deductibles.</li> <li>- May be guaranteed on Zero-Slope Deck</li> </ul>
PA-750 Hot Rubberized Asphalt	Up to 25 years	
Overburden Materials	Term	Description/Notes
Siplast or ZinCo Root Barriers, Drain Mats, Filter Fabrics, Stormwater Management Components, Growing Media	10 years	<ul style="list-style-type: none"> <li>- Siplast warrants that the components listed shall remain free from defects in workmanship from the date of substantial completion for the listed term. Limited to replacement of defective products in affected areas.</li> <li>- No additional charge for material warranties</li> </ul>
ZinCo Extensive Plant Material	2 years	<ul style="list-style-type: none"> <li>- Siplast/ZinCo to repair/replace and Vegetated Roof System Materials sold by Siplast to sustain 85% vegetated coverage with a minimum of 8 to 11 plant species per 100 SF. Replacement limited to cash value of Vegetated System Materials.</li> <li>- Care and Maintenance must be followed to maintain plant warranty eligibility.</li> </ul>
Overburden Removal & Replacement	Term	Description/Notes
Available with all Waterproofing Membranes	Duration of Membrane Guarantee	<ul style="list-style-type: none"> <li>- Siplast to remove overburden components by Siplast/ZinCo, identify and repair leaks, and replace overburden components.</li> <li>- \$1000 flat fee plus \$6/Square</li> </ul>

\* For qualified systems only. Additional requirements apply. Contact Siplast for more information. See sample warranties and guarantees, available at [siplast.com](http://siplast.com), for complete coverage and restrictions.





With you every step of the way

CANADA  
19748 86 Ave.  
Unit 155  
Langley, BC  
Canada V2Y 1Z5  
1.877.233.2338

UNITED STATES  
14911 Quorum Dr.  
Suite 600  
Dallas, TX 75254  
469.995.2200

[Siplast.com](https://www.siplast.com)

©2025 SIPLAST • SIPVEG047-0625