

### Description:

Siplast is your single-source provider of high-performance systems for the full building enclosure. From roofing and waterproofing to walls and below-grade, you have a trusted partner on every side of the building — all warranted by one manufacturer for consistency and convenience, and supported by design and field tech specialists ready to solve your toughest challenges. *With you every step of the way.*

TeraPROOF™ is our full portfolio of high-performance solutions for below-grade applications engineered to create a robust waterproofing solution for commercial buildings. TeraPROOF™ systems are for horizontal and vertical waterproofing applications and designed for use in below-grade pre-applied and post-applied waterproofing systems.

The application of TeraPROOF™ systems includes the use of liquid STP or SBS membranes, and accessories such as a protection course, drainage systems, and others, to complete installation.

### Products:

#### PRE-APPLIED



##### TeraPROOF™ Pre-Applied SBS Membranes

TeraPROOF™ Pre-Applied V-SBS and H-SBS Membrane are modified-bitumen, heat-weldable membranes for waterproofing applications. Designed for use in below-grade waterproofing systems prior to the placement of concrete, they consist of polyester mat impregnated and coated with SBS-modified bitumen. The top is surfaced with fine mineral aggregate and the bottom surface is coated with an SBS-modified bitumen adhesive layer specifically formulated for torch-lap sealing applications with a polyolefin burn-off film.

**V = Vertical Application** — 180-gram polyester mat    **H = Horizontal Application** — 250-gram polyester mat

#### POST-APPLIED



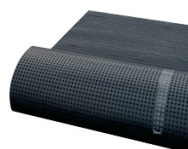
##### TeraPROOF™ STP Liquid Membrane

A liquid-applied, single-component, high-solids, flexible waterproofing membrane used as vertical and horizontal membrane applications in post-applied systems, such as concrete foundation walls, split slabs, inverted roof areas, planters, equipment wells, and other underground construction. It can also be used in detail applications of pre-applied system applications, and used in conjunction with Pro Fleece for reinforcement of the membrane or detail areas. Contact Siplast for all approved product uses.



##### TeraPROOF™ Protection CS100

A composite sheet (CS) utilizing a fleece-back and polymeric membrane. It is designed for use as a horizontal or vertical protection course and for protecting the waterproofing membrane from puncture from sources such as compacted subgrade below pre-applied waterproofing, backfill damage on post applied vertical waterproofing, or overburden elements in horizontal waterproofing assemblies.



##### TeraPROOF™ Drainage Mat

A high-performance, two-layer drainage composite that ensures a continuous path for water discharge and relieves hydrostatic pressure buildup. It features a dimpled drainage core made of impact- and tear-resistant co-polymer polypropylene, fully bonded to a high-strength, non-clogging needle-punched polypropylene — geotextile allowing water to pass freely while blocking soil particles to prevent clogging.



With you every step of the way



### Advantages:

- Single-source partner for all sides of the building
- Full portfolio of below-grade waterproofing offerings
- Tested and proven performance
- Vertical and horizontal waterproofing for pre-and post-applied applications
- System accessories available
- Siplast design and technical support
- Warranty coverage from one manufacturer

### Suitable for:

TeraPROOF™ systems are suitable for structures with below-grade levels that function as part of the building's operations or infrastructure, and where protecting environmental/occupant health is essential. These below-ground level areas may include:

- Commercial building structures
- Parking garages
- Tunnels and underpasses
- Storage and archives
- Service rooms and vaults

### TeraPROOF™ Product Applications

	TeraPROOF™ H-SBS	TeraPROOF™ V-SBS	TeraPROOF™ STP Liquid	TeraPROOF™ Protection CS1000	TeraPROOF™ 10-11 Drainage Mat
<b>PRE-APPLIED SYSTEM</b>					
Vertical Membrane	●	●	●		
Horizontal Membrane	●		●		
Torch-Applied Reinforcement	●				
Detail Flashing			●		
Horizontal Substrate Protection				●	●
Drainage and Filter Fabric					●
<b>POST-APPLIED SYSTEM</b>					
Vertical Membrane			●		
Horizontal Membrane			●		
Detail Flashing			●		
Backfill Protection				●	●
Drainage and Filter Fabric					●