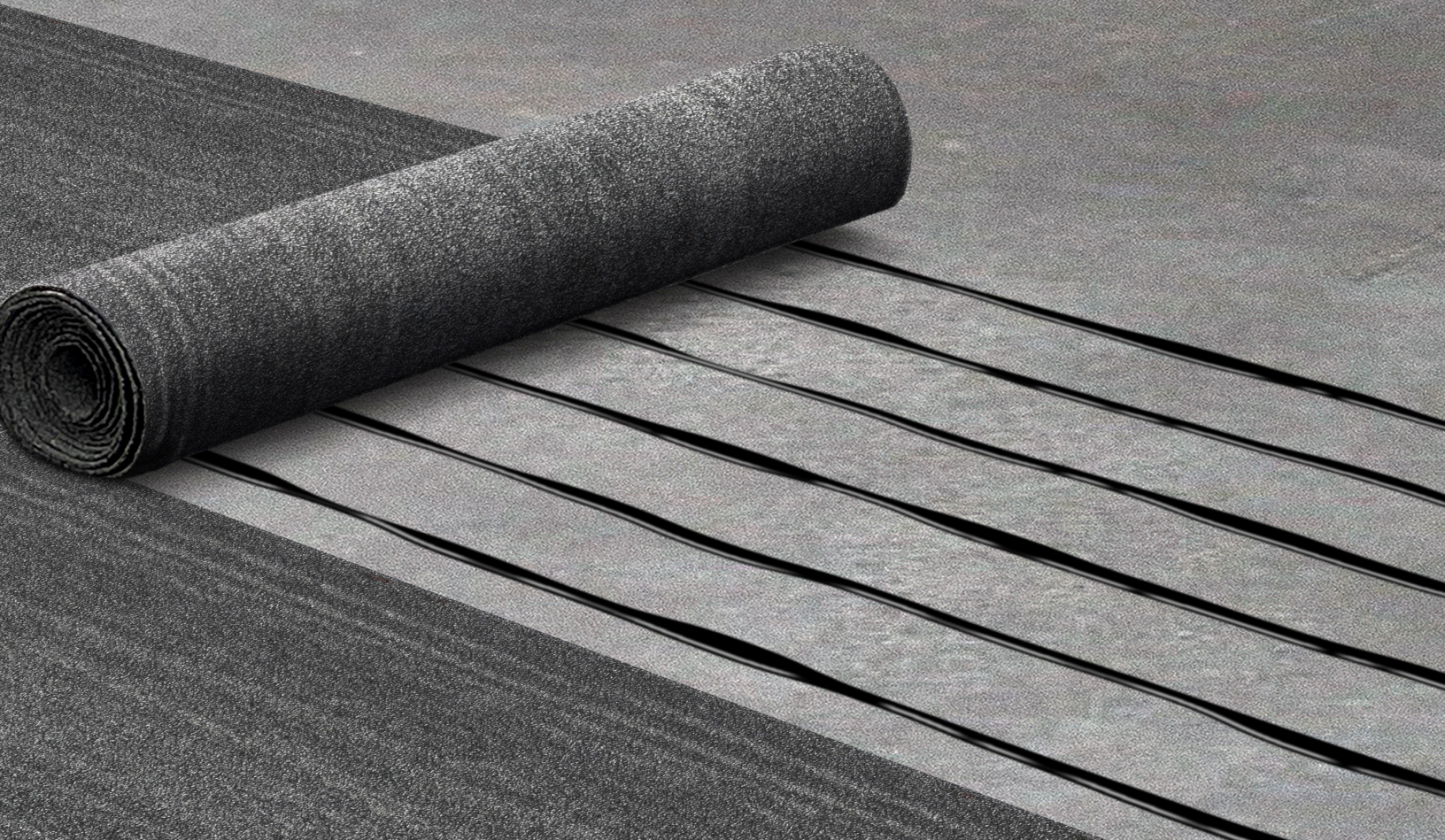


For Use With Siplast SBS-Modified Bitumen Roofing
& Waterproofing Sheets

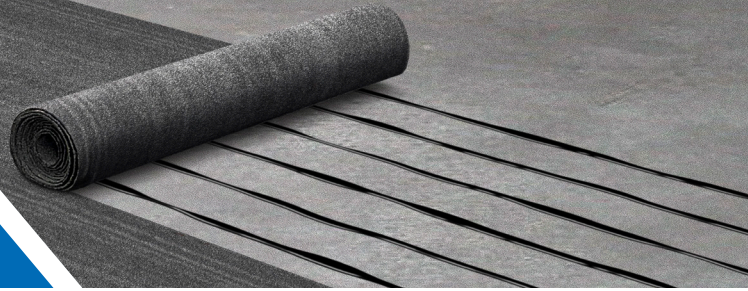
Siplast SFT Adhesive Ribbon Application



**Allows construction to continue with
quicker cure**

Allows construction to continue as soon as 14 days after the concrete is poured.

SFT Adhesive Ribbon Application



Description:

Siplast SFT Adhesive is single-component, high-solids, low-odor, liquid adhesive. Featuring a blend of proprietary polymers and modifiers, it is designed for use with Siplast SBS-modified bitumen roofing and waterproofing sheets. When SFT Adhesive is applied in ribbons for venting roof systems, it allows the unadhered portions between the adhesive to breathe, while dissipating vapor pressure from moisture in the substrate.

Siplast SFT Adhesive Ribbon Application method allows construction to continue as soon as 14 days after the concrete is poured, where traditional methods typically require that construction wait at least 30 days after the concrete is poured.

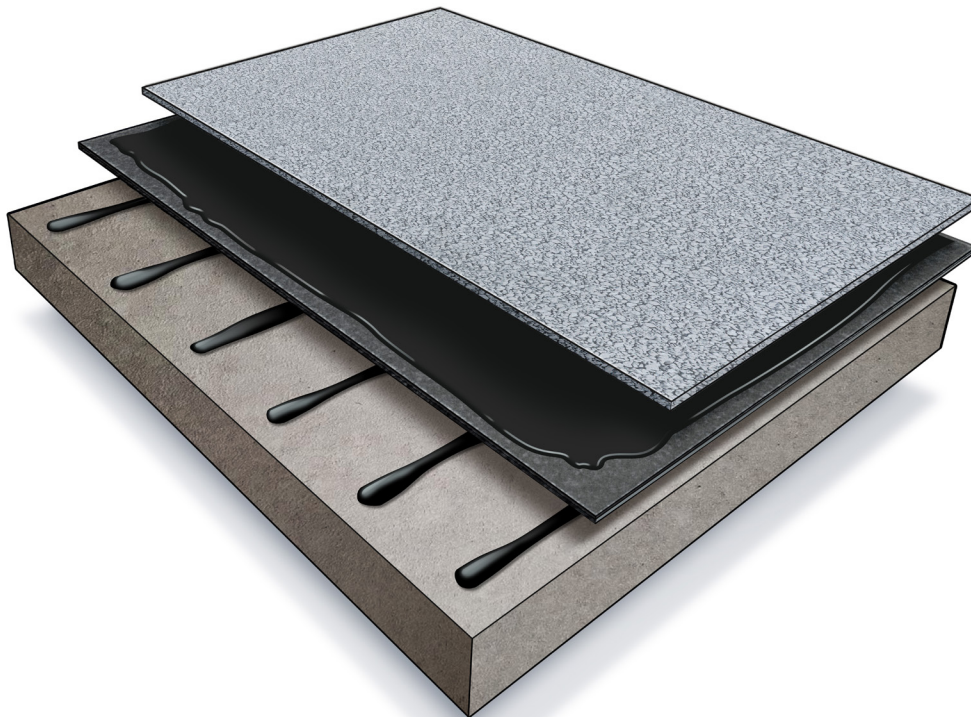
Advantages:

- Allows construction to continue as soon as 14 days after the concrete is poured.
- Can be applied as soon as deck hardens
- Not fully adhered, so concrete can breathe/dry with minimal adverse effects due to moisture
- Low VOC, formulated without solvents
- Quick and simple application
- Helps save time and increases efficiency during construction

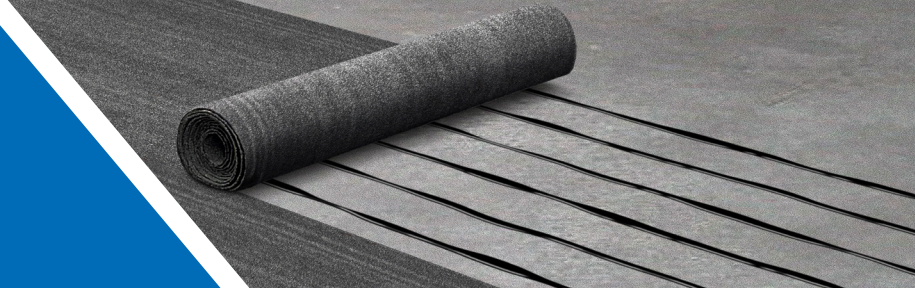
Suitable Products:

Siplast SFT Adhesive Ribbon Application can be used with the following Siplast SBS-modified bitumen roofing and waterproofing products:

- Paradiene 20/30
- Parafor 30/50
- Teranap
- Veral
- Paratech



SFT Adhesive Ribbon Application



How to Apply: Paradiene 20 in SFT Adhesive Ribbons

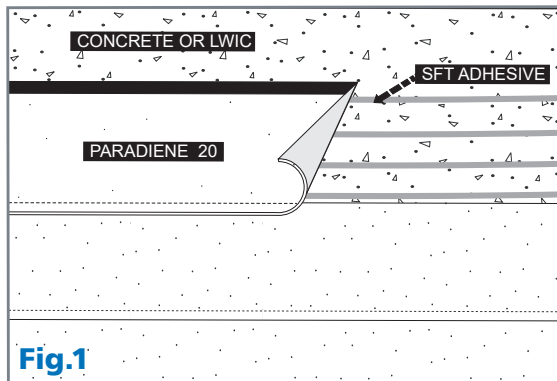


Fig.1

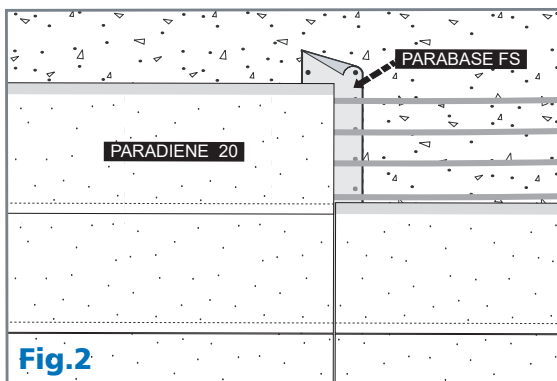


Fig.2

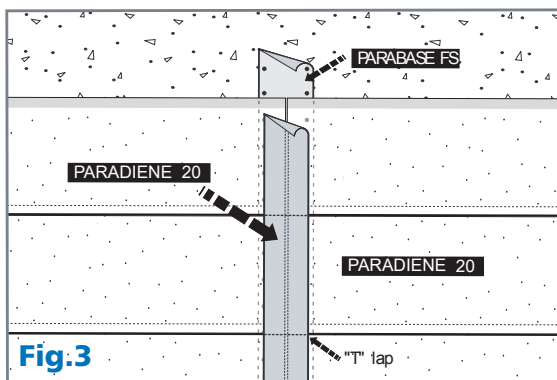


Fig.3

1. Prior to any application of adhesive, the Paradiene 20 rolls should be unrolled on the roof and allowed to relax. Then re-roll and set into place, as this will allow the roll to be rolled into the SFT Adhesive ribbons once applied. (See Figure 1.)
2. Beginning at the low point of the roof and using a spreader cart, apply SFT Adhesive in ribbons 3/4" to 1" wide with ribbons spaced 10" on center.
3. Following the adhesive ribbons, immediately apply a layer of Paradiene 20 over the wet adhesive ribbons.
4. A weighted roller must be used over the entire surface of the membrane. Hot air weld all laps.
5. Place a 12" wide strip of Parabase FS centered beneath the area where adjoining sections of Paradiene 20 base ply will be seamed. Abut adjoining ends of the base ply. Do not lap. (See Figure 2.)
6. Fully adhere minimum 12" wide strips of Paradiene 20 applied in PA-311 R Adhesive centered over the joints of the Paradiene 20 base ply. (See Figure 3.)
7. Probe "T" laps to ensure that full adhesion is achieved.

Notes:

Venting provisions must be incorporated into lightweight insulating concrete designs. The Parabase FS may be mechanically attached in areas where lightweight insulating concrete is present or adhered in dollops of PS-715 NS Elastomeric Sealant for concrete substrates. Paradiene 20 TG may be used in lieu of the Paradiene 20 referenced above.