

Seamless Waterproofing for Buried Applications

PA-750 Hot Fluid Applied Rubberized Asphalt



Fast-Setting, Fully Bonded Waterproofing

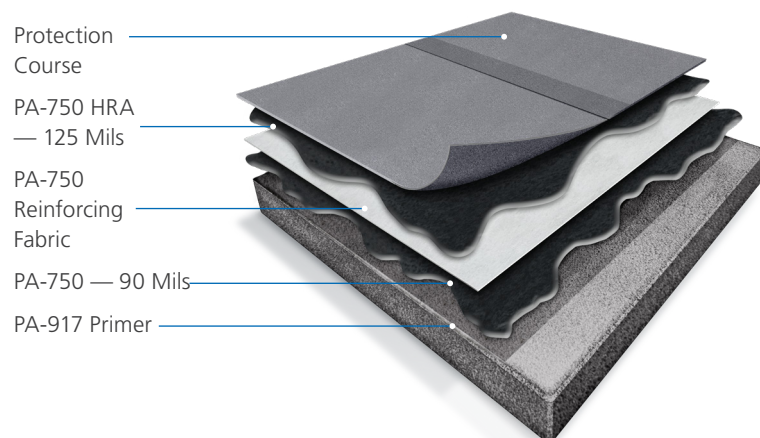
PA-750 Hot-Applied Rubberized Asphalt delivers a monolithic, fast-setting, fully adhered roofing and waterproofing membrane for plaza decks, vegetated roofs, split slab, and other buried applications. The PA-750 System installs easily, even in cold temperatures, to ensure performance in consistently wet environments.

PA-750 Hot Fluid-Applied Rubberized Asphalt

Description:

PA-750 is a hot fluid-applied rubberized asphalt waterproofing. The membrane is heated in a double-jacketed melter and applied at 400°F to a prepared substrate at 90 mils, reinforced with PA 750 reinforcing fabric, covered with 125 mil top coat before being protected by a modified bitumen protection course.

Typical PA 750 Application



Designed for waterproofing approved and properly prepared substrates for plaza deck, protected/ballasted, or other covered applications.

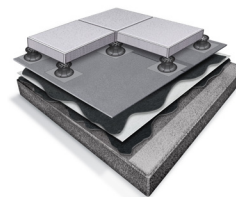
Advantages:

- Installed as a continuous membrane, bonding directly to properly prepared substrate.
- Fast Setting — comprised of 100% solids. No mixing, no curing, PA-750 simply cools to a solid state.
- Flexible — accommodates limited building movement and bridging of small cracks up to 1/8" wide with proper treatment.
- At 215 mils fabric-reinforced, PA-750 is 2–3 times thicker than many sheet membranes.
- Can be installed in temperatures down to 0°F, creating a longer application season.
- Designed to perform in buried applications with consistently wet conditions.
- Can be installed and eligible for limited guarantee coverage in zero-slope applications.
- Liquid application — allows for easy detailing of complex conditions.
- Flashing options: SBS-Granulated Membranes, Parapro PMMA, and Veral.

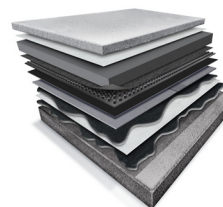
Suitable for the Following Applications:



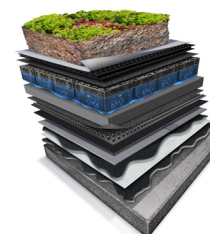
Vegetated Roofs



Plaza/Amenity Decks



Parking Decks/Split Slab Bridge Decks



Stormwater Management Systems