

Acoustic Roof Design

Engineered Lightweight Insulating Concrete



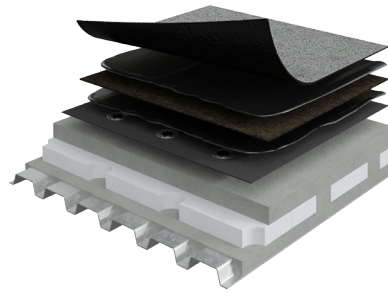
Siplast LWIC Acoustic Roof Design: Precision Performance for Every Project

Engineered Lightweight Insulating Concrete (LWIC) Systems from Siplast deliver superior STC (Sound Transmission Class) and OITC (Outdoor-Indoor Transmission Class) acoustic performance, custom-tailored for demanding environments like performing arts centers, schools, music venues, and movie production facilities.

With hundreds of acoustic tests conducted with a wide range of membranes and attachments over various roof deck types — including steel, structural concrete, cross-laminated timber (CLT), and Tectum — Siplast takes the guesswork out of your acoustic design.

Contact Siplast for a system that is tested, proven, and trusted.

Acoustic Performance Ranges (STC / OITC):*



LWIC over Steel Deck

STC: 37 – 56

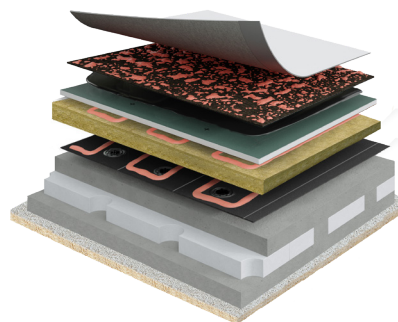
OITC: 34 – 44



LWIC over Structural Concrete Decks

STC: 51 – 62

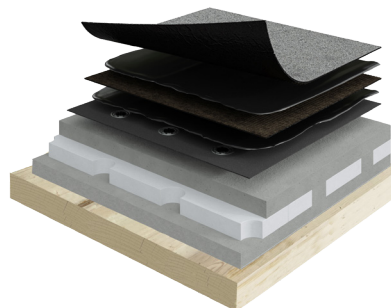
OITC: 43 – 46



LWIC over Tectum Deck Panels

STC: 41 – 57

OITC: 37 – 47



LWIC over Cross-Laminated Timber (CLT) Deck Panels

STC: 43 – 60

OITC: 37 – 45

*The diagrams are representative assemblies that fall within the tested ranges above.