

Polyurethane & Polyurea Deck Coatings



With you every step of the way

Customized Concrete Protection Solutions

Siplast Terapro PUR Deck Coating

Siplast Terapro PUR Deck Coatings are an effective, economical solution suitable for protecting lower decks, intermediate parking garages, and parking spaces, as well as for surfaces outside of trafficable areas, such as balconies. Our Terapro PUR product line consists of two-component polyurethane- and polyurea-based coatings providing concrete protection and skid resistance* to help protect against abuse from light to medium vehicular and pedestrian traffic.

Terapro PUR is an ideal solution for intermediate parking garages, parking stalls, and other areas of lower abuse and traffic. Siplast Terapro systems with PMMA, formulated with a more durable chemistry, can be used on the turn radius and ramps of parking garage areas of heavier traffic. Siplast can also create a tailored assembly to meet the specific requirements of your project.

Drive precisely the amount of durability your project demands by adding layers of Terapro PUR. You can also maximize durability by installing a hybrid system offering the benefits of both Terapro PUR polyurethane and Terapro PMMA technologies.



Formulated for Flexibility

Siplast Terapro PUR deck coatings are comprised of polyurethane or a combination of polyurethane and polyurea, which are liquid, synthetic polymers that form a protective barrier when applied to surfaces. These chemistries can help protect surfaces from corrosion, weathering, and abrasion.[†]



Additional advantages of Terapro PUR include:

- **Durability:** Durable protection against chemicals, water, and abrasion[†]
 - **Versatility:** Can adhere to many types of surfaces and materials
 - **Skid resistance:** Tested in accordance with ASTM E303 to provide skid resistance
 - **UV resistance:** Can be used as a top coat over epoxy priming to provide UV resistance
 - **Customization:** Can be customized to meet the desired aesthetic of your project, with several options for surfacing and color finishes
- Meets Siplast standards:** Backed by Siplast's history, partnership, and stringent quality control

^{*} Tested in accordance with ASTM E303.

[†] Siplast warranties and guarantees do not provide coverage against exposure to chemicals, including vehicular fluids, or abrasion. Refer to siplast.com for more information on warranty and guarantee coverage and restrictions.



Terapro PUR Systems

Choose the Terapro PUR Deck Coating System that provides the right type of protection, based on the level of vehicular and pedestrian traffic anticipated. Each of our three Terapro PUR Deck Coating Systems comprises various layers of coatings.

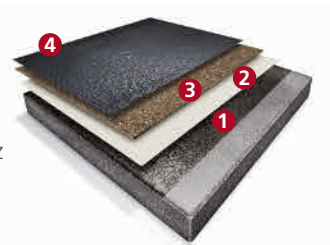


Learn more about
Terapro PUR Deck Coatings

Terapro PUR Heavy Exposed Vehicular System

An easy to use, hand-applied, multi-layer elastomeric waterproofing concrete protection system designed for vehicular and pedestrian traffic in vehicular decks on exposed surfaces. This system is tested in accordance with ASTM E303 to provide skid resistance, has no noxious odors, and low VOC. After application, the surface is ready in 12 hours for pedestrian traffic and 24 hours for vehicular traffic.* Meets ASTM C957.

- 1. Primer Coat:** Varies based on substrate
- 2. Base Coat:** Terapro PUR 2200
- 3. Intermediate Coat with Aggregate:** Terapro PUR 3200 with Terapro VTS Quartz
- 4. Top Coat:** Terapro PUR 3200



**Terapro PUR
Light Exposed
Vehicular System**

**Terapro PUR
Pedestrian System**



**Terapro PUR
Heavy Exposed
Vehicular System**

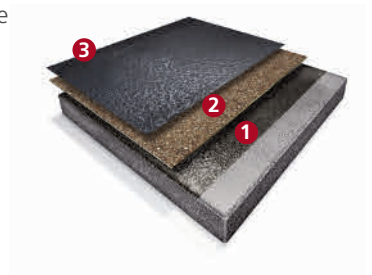




Terapro PUR Light Exposed Vehicular System

An easy to use, hand-applied, multi-layer elastomeric concrete protection system designed for traffic in vehicular decks on light exposed surfaces. This system is tested in accordance with ASTM E303 to provide skid resistance, has no noxious odors, and low VOC. After application, the surface is ready in 12 hours for pedestrian traffic and 24 hours for vehicular traffic.*

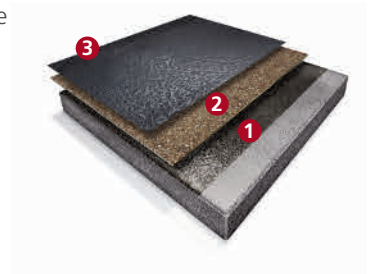
- 1. Primer Coat:** Varies based on substrate
- 2. Base Coat with Aggregate:** Terapro PUR 3200 with Pro Natural Quartz
- 3. Top Coat:** Terapro PUR 3200



Terapro PUR Pedestrian System

An easy to use, hand-applied, multi-layer elastomeric concrete protection system designed for pedestrian traffic in vehicular decks and plaza decks. This system is tested in accordance with ASTM E303 to provide skid resistance, has no noxious odors, and low VOC. After application, the surface is ready in 12 hours for pedestrian traffic.*

- 1. Primer Coat:** Varies based on substrate
- 2. Base Coat with Aggregate:** Terapro PUR 3200 with Pro Texture Beads
- 3. Top Coat:** Terapro PUR 3200



* Ambient and substrate temperatures affect the application of Terapro PUR Deck Coating Systems. Refer to Installation Guide for ambient and substrate temperature guidelines and restrictions.



Terapro PUR Product Portfolio

Primers

Terapro E 1200	Two-component 100% solids epoxy primer designed to treat new and existing concrete, masonry, and wood	<ul style="list-style-type: none"> - 100% solids - High strength - No noxious odors - Non-blushing - Eligible for USGBC LEED, EQ Credit 4.2: Low-emitting VOC Compliant Materials[§] 	3-gallon kit
Pro Primer E	Moisture-reducing primer designed to treat new or existing concrete. A 100% solids, plural component epoxy that is alkali-resistant and can help reduce moisture vapor emission levels from 25 lb. to less than 3 lb. per 1,000 ft.**	<ul style="list-style-type: none"> - Low VOCs – 100% solids - No noxious odors - Alkali-resistant - Eligible for USGBC LEED, EQ Credit 4.2: Low-emitting VOC Compliant Materials[§] 	3-gallon kit

Base Coat

Terapro PUR 2200	Two-component hand-applied elastomeric polyurea base coat used as a protective/waterproof coating for interior and exterior concrete, wood, and metal surfaces. It is fast-setting and curing, which allows for applications in temperatures below 40°F.	<ul style="list-style-type: none"> - Can be applied at any thickness - Can be applied at low temperatures below 40°F - Provides protection against abrasion and chemical exposure^{††} - No noxious odors - Thermal stability - Non-gassing - Eligible for USGBC LEED, EQ Credit 4.2: Low-emitting VOC Compliant Materials[§] 	5-gallon kit
-------------------------	--	---	--------------

Top Coat

Terapro PUR 3200	Two-component hand-applied hybrid aliphatic elastomeric polyurea top coat, used as a protective/waterproof coating for interior and exterior concrete, wood, and metal surfaces. May also be used as a joint filler.	<ul style="list-style-type: none"> - Can be applied at low temperatures below 40°F - Provides protection against abrasion and chemical exposure^{††} - No noxious odors - Thermal stability - Non-gassing - Eligible for USGBC LEED, EQ Credit 4.2: Low-emitting VOC Compliant Materials[§] 	2.5-gallon kit
-------------------------	--	--	----------------

Accessories

Terapro PUR Patch V	A fast-setting, two-component modified urethane concrete repair material. Its thixotropic consistency allows for vertical repairs without sagging.	<ul style="list-style-type: none"> - Provides protection against abrasion ^{††} - High impact resistance - Low odor - Minimal prep/down time - Quick set time - Non sag - Eligible for USGBC LEED, EQ Credit 4.3: Low-emitting VOC Compliant Materials[§] 	1-gallon kit
Terapro VR	Rheology modifier for Terapro PUR 3200 top coat to reduce the viscosity of the mixed coating system	<ul style="list-style-type: none"> - Reduces viscosity of mixed Terapro PUR 3200 top coat - Improves workability of Terapro PUR 3200 at lower temperatures 	1-gallon container
Terapro PUR Activator	Water-soluble, organic solvent stripping agent designed to increase the bond between existing polyurea and other materials being applied onto them	<ul style="list-style-type: none"> - Promotes adhesion between existing and new polyurea - Promotes adhesion of other coatings applied onto existing polyurea 	1-gallon F style container



Finishes & Surfacing Options

Easy-to-clean Terapro PUR finish layers are available in a variety of standard colors, which can be used alone or applied in patterns for dramatic effects or practical purposes such as designating traffic paths.

To request a physical sample, please contact your Siplast Representative.

Terapro PUR Top Coat Color Options



Light Gray #7035



Traffic Gray A #7042



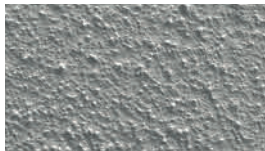
Traffic Gray B #7043

Siplast Terapro PUR Systems can be surfaced with hard-wearing Pro Natural Quartz for high traffic conditions or Pro Texture Beads for lighter-duty applications. Both surfacing options offer a solid color and clean appearance.

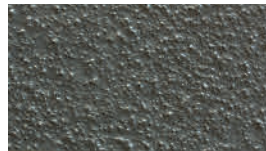
Pro Natural Quartz Color Options



Light Gray #7035



Traffic Gray A #7042

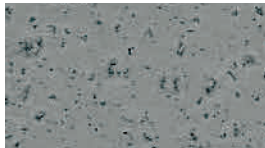


Traffic Gray B #7043

Pro Texture Beads Color Options



Light Gray #7035



Traffic Gray A #7042



Traffic Gray B #7043

§ For more information, visit USGBC.org to see LEED credit eligibility requirements.

** Values stated are approximate and subject to normal manufacturing variation. These values are not guaranteed and are provided solely as a guide.

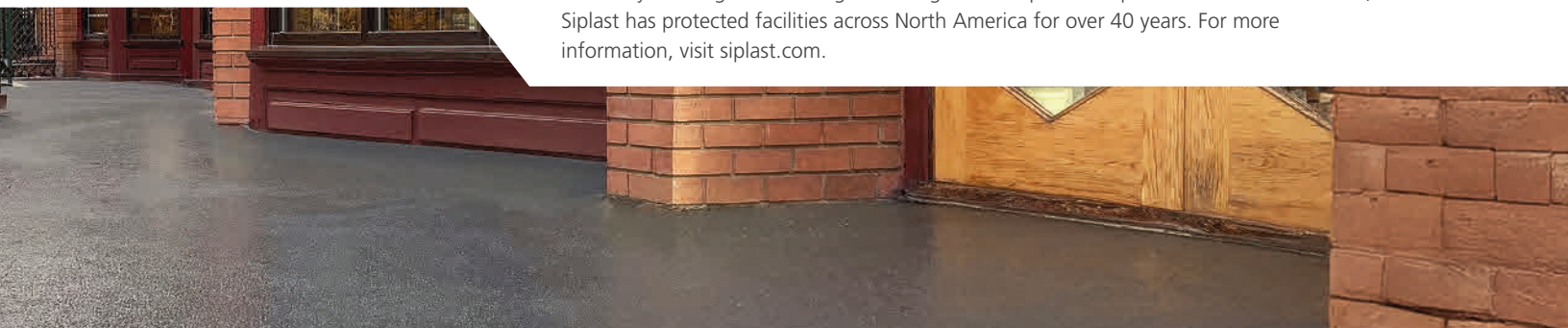
†† Siplast warranties and guarantees do not provide coverage against exposure to chemicals, including vehicular fluids, or abrasion. Refer to siplast.com for more information on warranty and guarantee coverage and restrictions.

NOTE: The color samples in this document may not precisely match their physical equivalents. Always refer to physical samples before making your color choices.



With you every step of the way

Siplast, a leader in roofing, waterproofing, and building enclosure solutions, is working to solve your toughest challenges. Through trusted partnerships and innovative solutions, Siplast has protected facilities across North America for over 40 years. For more information, visit siplast.com.





With you every step of the way

CANADA
19748 86 Ave.
Unit 155
Langley, BC
Canada V2Y 1Z5
1.877.233.2338

UNITED STATES
14911 Quorum Dr.
Suite 600
Dallas, TX 75254
469.995.2200

[Siplast.com](https://www.Siplast.com)

©2025 SIPLAST • SIPP028-0325