

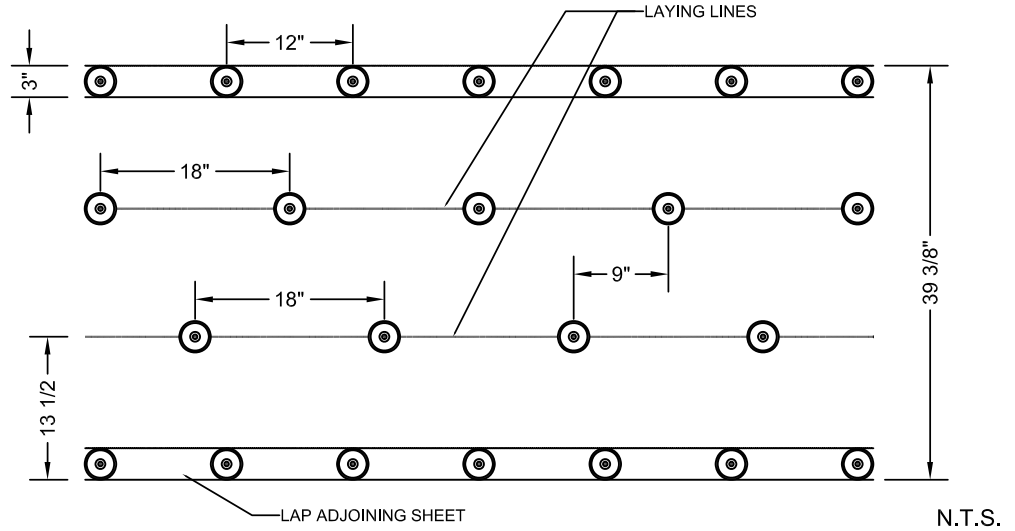
# BASE SHEET FASTENING

Irex base sheet

Parafast fasteners w/3" Plate

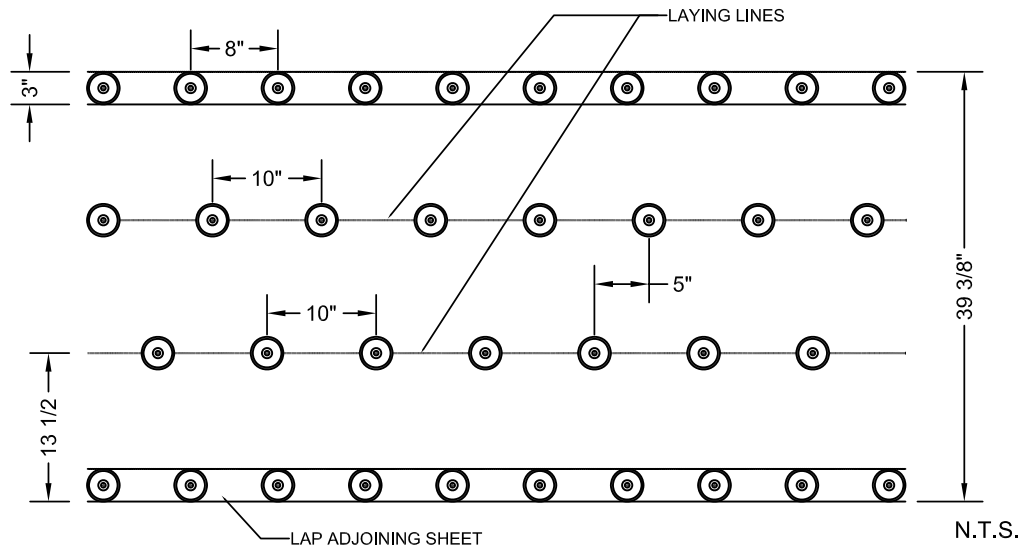
## FIELD

12" through side laps  
 2 rows in the field w/ fastener spacing in each row on 18" centers  
 Approx. 79 fasteners/sq



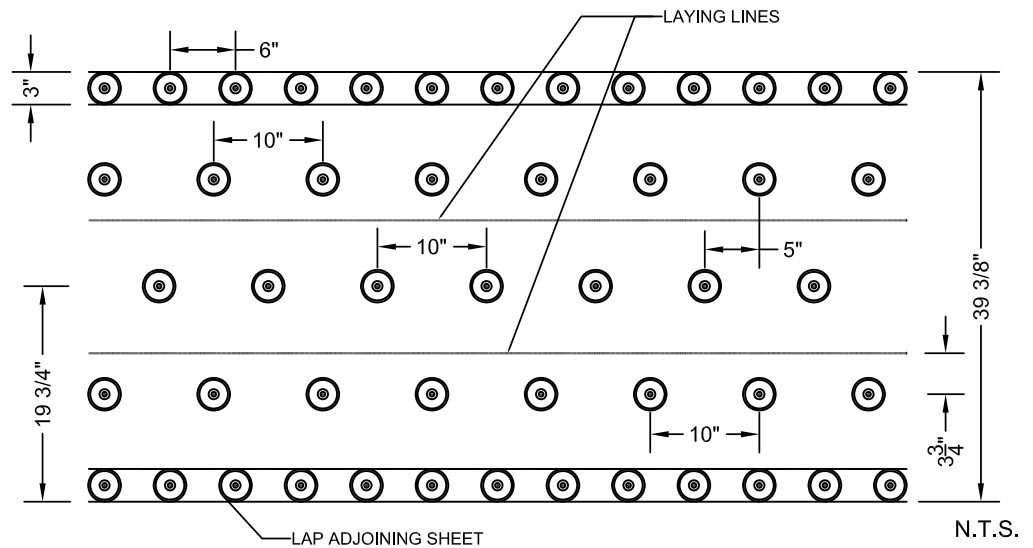
## PERIMETER

8" through side laps  
 2 rows in the field w/ fastener spacing in each row on 10" centers  
 Approx. 135 fasteners/sq



## CORNER (if required)

6" through side laps  
 3 rows in the field w/ fastener spacing in each row on 10" centers  
 Approx. 206 fasteners/sq



NOTES: 1. THE ABOVE FASTENING PATTERNS ARE RECOMMENDED FOR BASE SHEET SECUREMENT BELOW SIPLAST MEMBRANE SYSTEMS.  
 2. CONTACT SIPLAST FOR RECOMMENDED FASTENING PATTERNS TO MEET SPECIFIC TESTING, CODE AGENCY, OR GUARANTEE REQUIREMENTS.



1000 East Rochelle Blvd. - Irving, Texas - 75062  
 (800) 922-8800 - www.siplast.com

Ref: Irex Pfast-3"P (12x18x18)

Date: 10.28.09