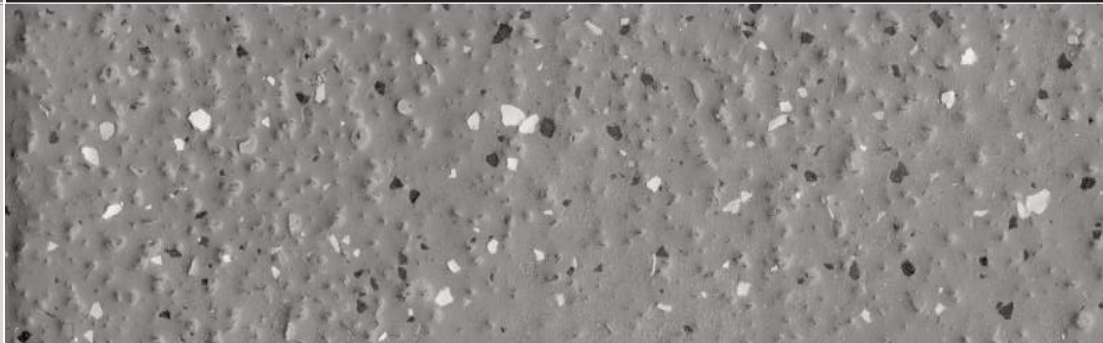
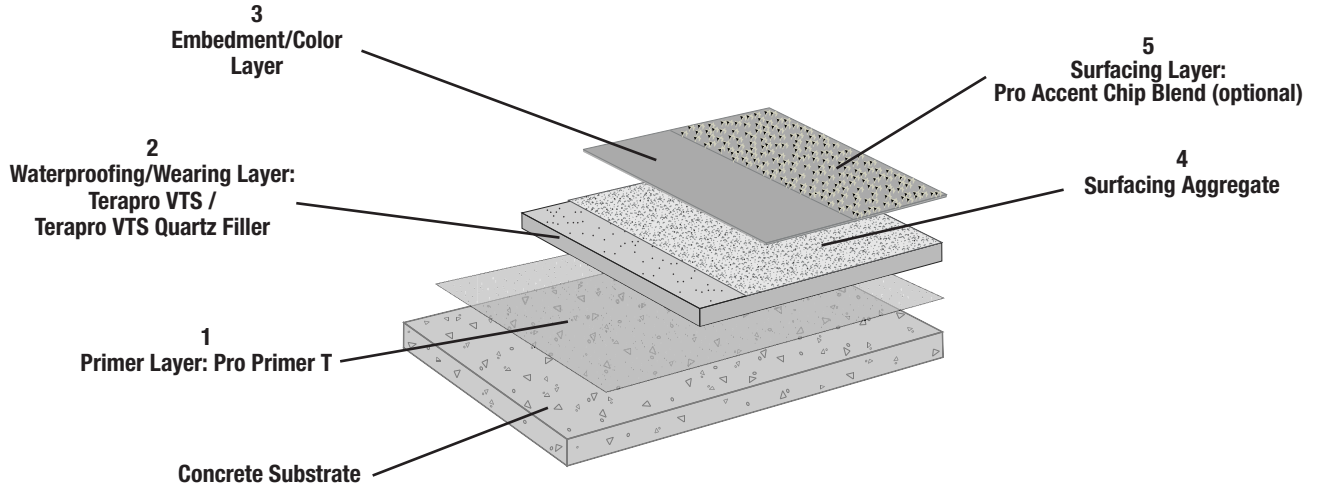


**Pro Color Finish/Pro Texture Beads
Unreinforced**



Terapro Unreinforced Pro Color Finish/Pro Texture Beads Unoccupied Space



| MATERIALS WATERPROOFING & SURFACING | AREA TO BE COVERED (sf) | COVERAGE (sf) PER UNIT | CALCULATED NO. OF UNITS NEEDED | WASTE FACTOR* | TOTAL NO. OF UNITS NEEDED | CATALYST NEEDED | NO. PRO CATALYST BAGS PER CAN |
|--|-------------------------|------------------------|--------------------------------|---------------|---------------------------|-----------------|--|
| 1. PRIMER LAYER Pro Primer T Unit (Concrete Substrates): 10–kg can Consumption 0.037 kg/sf (0.4 kg/m ²) (concrete) 10–kg can coverage: 270 sf | ÷ | 270 = | + | = | Cans | Bags | 2 bags per can at 2% 4 bags per can at 4% 6 bags per can at 6% |
| 2. WATERPROOFING/WEARING LAYER Terapro VTS Resin Resin: 10–kg can Consumption: 0.14 kg/sf (1.5 kg/m ²) 10–kg can coverage: 71 sf FILLER Terapro VTS Quartz Filler: 22–kg (50 lb) Bag coverage: 71 sf | ÷ | 71 = | + | = | Cans | Bags | 2 bags per can at 2% 4 bags per can at 4% 6 bags per can at 6% |
| 3. EMBEDMENT/COLOR LAYER Pro Color Finish: 10–kg can Consumption: 0.045 kg/sf (0.5 kg/m ²) 10–kg can coverage: 215 sf | ÷ | 215 = | + | = | Bags | | n/a |
| 5. SURFACING TEXTURE Texture Beads: 5–kg pail Consumption: 0.002 kg/sf (0.022 kg/m ²) 5–kg Coverage: 2500 sf | ÷ | 2500 = | + | = | Pail | | |
| ACCENT CHIPS (OPTIONAL) Pro Accent Chips: 5–kg box Consumption: 0.01 kg/sf (0.1 kg/m ²) 5–kg box coverage: 500 sf | ÷ | 500 = | + | = | Boxes | | n/a |

*Coverage quantities are based on published minimum weight and coverage requirements. The above estimates do not include provisions for crack/joint treatment, edge treatment, rough/absorbent surfaces, or waste (including material required for saturation of roller covers). The contractor is responsible for the additional material required by such circumstances. A waste factor should be included in all estimates.

Pro Catalyst Mixing Charts

The amount of Pro Catalyst required varies, depending upon the ambient temperatures as indicated in the tables below.

| Terapro Base Resin and Terapro Flashing Resin - Summer Grade | | | | | | | | |
|--|---|------|--------|-------------|---|------|--------|-------------|
| Resin Quantity | Summer Grade 2% Catalyst 68°F to 95°F (20°C to 35°C) | | | | Summer Grade 4% Catalyst 59°F to 68°F (15°C to 20°C) | | | |
| | g | kg | Tblsp. | 0.1-kg Bags | g | kg | Tblsp. | 0.1-kg Bags |
| 1.0 kg (0.72 liter) | 20 | 0.02 | 2 | n/a | 40 | 0.04 | 4 | n/a |
| 5.0 kg (3.6 liter) | 100 | 0.1 | 10 | 1 | 200 | 0.2 | 20 | 2 |
| 10.0 kg (7.2 liter) | 200 | 0.2 | 20 | 2 | 400 | 0.4 | 40 | 4 |
| Substrate temperature range for application of Summer Grade Terapro Base and Flashing Resin is 59°F to 122°F (15°C to 50°C). | | | | | | | | |

| Terapro VTS Resin | | | | | | | | | | | | |
|--|--|-----|--------|-------------|---|-----|--------|-------------|--|-----|--------|-------------|
| Resin Quantity | 2% Catalyst 77°F to 95°F (25°C to 35°C) | | | | 4% Catalyst 41°F to 77°F (5°C to 25°C) | | | | 6% Catalyst 32°F to 41°F (0°C to 5°C) | | | |
| | g | kg | Tblsp. | 0.1-kg Bags | g | kg | Tblsp. | 0.1-kg Bags | g | kg | Tblsp. | 0.1-kg Bags |
| 5.0 kg (5 liter) | 100 | 0.1 | 10 | 1 | 200 | 0.2 | 20 | 2 | 300 | 0.3 | 30 | 3 |
| 10.0 kg (10 liter) | 200 | 0.2 | 20 | 2 | 400 | 0.4 | 40 | 4 | 600 | 0.6 | 60 | 6 |
| Substrate temperature range for application of Terapro VTS Resin is 32°F to 122°F (0°C to 50°C). | | | | | | | | | | | | |

| Terapro Base Resin and Terapro Flashing Resin - Winter Grade | | | | | | | | | | | | |
|---|---|------|--------|-------------|--|------|--------|-------------|--|------|--------|-------------|
| Resin Quantity | Winter Grade 2% Catalyst 59°F to 68°F (15°C to 20°C) | | | | Winter Grade 4% Catalyst 41°F to 59°F (5°C to 15°C) | | | | Winter Grade 6% Catalyst 23°F to 41°F (-5°C to 5°C) | | | |
| | g | kg | Tblsp. | 0.1-kg Bags | g | kg | Tblsp. | 0.1-kg Bags | g | kg | Tblsp. | 0.1-kg Bags |
| 1.0 kg (0.72 liter) | 20 | 0.02 | 2 | n/a | 40 | 0.04 | 4 | n/a | 60 | 0.06 | 6 | n/a |
| 5.0 kg (3.6 liter) | 100 | 0.1 | 10 | 1 | 200 | 0.2 | 20 | 2 | 300 | 0.3 | 30 | 3 |
| 10.0 kg (7.2 liter) | 200 | 0.2 | 20 | 2 | 400 | 0.4 | 40 | 4 | 600 | 0.6 | 60 | 6 |
| Substrate temperature range for application of Winter Grade Terapro Base and Flashing Resin is 23°F to 77°F (-5°C to 25°C). | | | | | | | | | | | | |

| Pro Primer W Resin - Pro Primer T Resin - Pro Primer R Resin | | | | | | | | | | | | |
|--|--|------|--------|-------------|---|------|--------|-------------|--|------|--------|-------------|
| Resin Quantity | 2% Catalyst 77°F to 95°F (25°C to 35°C) | | | | 4% Catalyst 71°F to 77°F (5°C to 25°C) | | | | 6% Catalyst 32°F to 41°F (0°C to 5°C) | | | |
| | g | kg | Tblsp. | 0.1-kg Bags | g | kg | Tblsp. | 0.1-kg Bags | g | kg | Tblsp. | 0.1-kg Bags |
| 1.0 kg (1 liter) | 20 | 0.02 | 2 | n/a | 40 | 0.04 | 4 | n/a | 60 | 0.06 | 6 | n/a |
| 5.0 kg (5 liter) | 100 | 0.1 | 10 | 1 | 200 | 0.2 | 20 | 2 | 300 | 0.3 | 30 | 3 |
| 10.0 kg (10 liter) | 200 | 0.2 | 20 | 2 | 400 | 0.4 | 40 | 4 | 600 | 0.6 | 60 | 6 |
| Substrate temperature range for application of Pro Primer W, T and R Resins is 32°F to 95°F (0°C to 35°C). | | | | | | | | | | | | |

| Pro Color Finish Resin | | | | | | | | | | | | |
|--|--|-----|--------|-------------|---|-----|--------|-------------|--|-----|--------|-------------|
| Resin Quantity | 2% Catalyst 59°F to 95°F (15°C to 35°C) | | | | 4% Catalyst 41°F to 59°F (5°C to 15°C) | | | | 6% Catalyst 32°F to 41°F (0°C to 5°C) | | | |
| | g | kg | Tblsp. | 0.1-kg Bags | g | kg | Tblsp. | 0.1-kg Bags | g | kg | Tblsp. | 0.1-kg Bags |
| 1.0 kg (1.0 liter) | 20 | .02 | 2 | n/a | 40 | .04 | 4 | n/a | 60 | .06 | 6 | n/a |
| 5.0 kg (5.0 liter) | 100 | 0.1 | 10 | 1 | 200 | 0.2 | 20 | 2 | 300 | 0.3 | 30 | 3 |
| 10.0 kg (10.0 liter) | 200 | 0.2 | 20 | 2 | 400 | 0.4 | 40 | 4 | 600 | 0.6 | 60 | 6 |
| Substrate temperature range for application of Pro Color Finish is 32°F to 95°F (0°C to 35°C). | | | | | | | | | | | | |

| Pro Paste Resin | | | | | | | | | | | | |
|--|--|------|--------|-------------|---|------|--------|-------------|--|------|--------|-------------|
| Resin Quantity | 2% Catalyst 77°F to 95°F (25°C to 35°C) | | | | 4% Catalyst 41°F to 77°F (5°C to 25°C) | | | | 6% Catalyst 32°F to 41°F (0°C to 5°C) | | | |
| | g | kg | Tblsp. | 0.1-kg Bags | g | kg | Tblsp. | 0.1-kg Bags | g | kg | Tblsp. | 0.1-kg Bags |
| 1.0 kg (0.72 liter) | 20 | 0.02 | 2 | n/a | 40 | 0.04 | 4 | n/a | 60 | 0.06 | 6 | n/a |
| 5.0 kg (3.6 liter) | 100 | 0.1 | 10 | 1 | 200 | 0.2 | 20 | 2 | 300 | 0.3 | 30 | 3 |
| Substrate temperature range for application of Pro Paste is 32°F to 122°F (0°C to 50°C). | | | | | | | | | | | | |

This publication is an estimating guide only, based on calculated minimum material usage rates. Substrate conditions or application techniques may affect actual material usage. It is the responsibility of the contractor to calculate any anticipated material overages based on those factors.

Siplast

1000 Rochelle Blvd.

Irving, Texas 75062

469-995-2200

Facsimile: 469-995-2205

In Canada:

201 Bewicke Ave., Suite 208

Vancouver, BC, Canada V7M 3M7

604-929-7687

Customer Service in North America:

Toll Free 1-800-922-8800

www.siplast.com