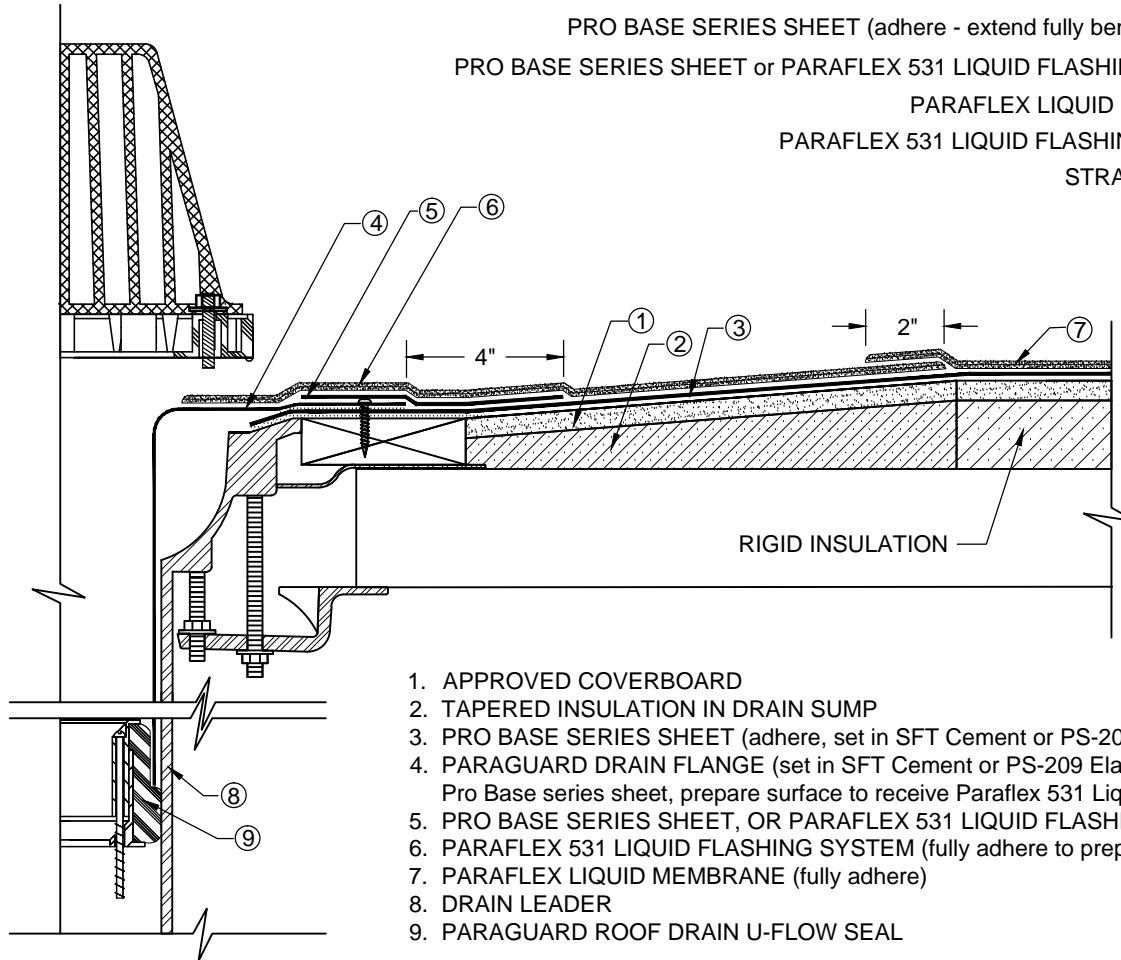
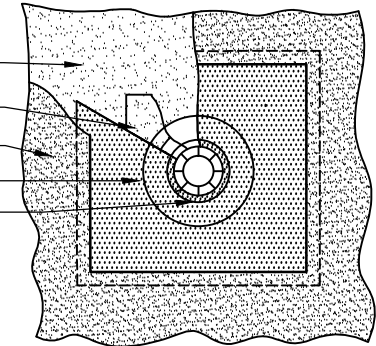


# PARAGUARD ROOF DRAIN

## PARAFLEX LIQUID MEMBRANE - PRO BASE SERIES BASE PLY - RIGID INSULATION

OVERHEAD VIEW



PRO BASE SERIES SHEET (adhere - extend fully beneath flange, See note # 3)  
 PRO BASE SERIES SHEET or PARAFLEX 531 LIQUID FLASHING SYSTEM (fully adhere)  
 PARAFLEX LIQUID MEMBRANE (fully adhere)  
 PARAFLEX 531 LIQUID FLASHING SYSTEM (fully adhere)  
 STRAINER & CLAMPING RING

1. APPROVED COVERBOARD
2. TAPERED INSULATION IN DRAIN SUMP
3. PRO BASE SERIES SHEET (adhere, set in SFT Cement or PS-209 6" around drain opening)
4. PARAGUARD DRAIN FLANGE (set in SFT Cement or PS-209 Elastomeric Sealant, fasten flange to substrate, prime area to receive Pro Base series sheet, prepare surface to receive Paraflex 531 Liquid Flashing System)
5. PRO BASE SERIES SHEET, OR PARAFLEX 531 LIQUID FLASHING SYSTEM (fully adhere, extend 4" beyond drain flange)
6. PARAFLEX 531 LIQUID FLASHING SYSTEM (fully adhere to prepared surfaces, allow to cure prior to application of field membrane)
7. PARAFLEX LIQUID MEMBRANE (fully adhere)
8. DRAIN LEADER
9. PARAGUARD ROOF DRAIN U-FLOW SEAL

NOTES:

1. REFER TO SIPLAST PREPARATION GUIDELINES FOR PROPER SURFACE TREATMENT OF ALL MATERIALS PRIOR TO APPLICATION OF PARAFLEX LIQUID MATERIALS.
2. WHERE PRIMER IS INDICATED TO MAINTAIN PROPER ADHESION, TA-119 PRIMER IS REQUIRED FOR ALL PRO BASE SA SERIES FLASHING REINFORCING AND STRIPPING PLY APPLICATIONS. USE PA-1125 OR PA-917 LS PRIMER FOR ALL OTHER PRO BASE SERIES PRODUCTS THAT ARE NOT SELF-ADHESIVE. CONTACT SIPLAST FOR SPECIFIC REQUIREMENTS.
3. FOLLOW SIPLAST SPECIFICATIONS FOR INSTALLATION OF PARAGUARD ROOF DRAIN COMPONENTS.
4. PARAFLEX CANNOT BE APPLIED IN THE ABOVE CONFIGURATION OVER MEMBRANES APPLIED IN SOLVENT-BASED ADHESIVES. CONTACT SIPLAST FOR FURTHER INFORMATION.
5. REFER TO SIPLAST FLEECE CUTTING RECOMMENDATIONS FOR CONFIGURATIONS, CUTTING, FOLDING, AND LAPPING TECHNIQUES.
6. CONTACT SIPLAST FOR FURTHER INFORMATION ON SELECTING THE APPROPRIATE PRO BASE SERIES SHEET FOR A SPECIFIC APPLICATION.
7. PRIME THE BLEEDOUT AT SIDE AND END LAPS OF PRO BASE PLY SHEETS USING PRO PRIMER AC TO MAINTAIN A CONSISTENT AESTHETIC APPEARANCE OF THE FINISHED PARAFLEX SYSTEM.
8. REQUIREMENTS AND RECOMMENDATIONS DETAILED IN CURRENT SIPLAST SPECIFICATIONS AND THE PARAFLEX LIQUID MEMBRANE SYSTEM INSTALLERS GUIDE SHALL APPLY IN ADDITION TO THE ABOVE DRAWING.

CAUTION: SIPLAST RECOMMENDS THAT ALL PRACTICES PERTAINING TO NRCA CERTA GUIDELINES BE FOLLOWED WHEN TORCHING METHODS ARE EMPLOYED. THIS INCLUDES PERFORMING A FIRE WATCH FOLLOWING ANY TORCH APPLICATIONS. ALWAYS HAVE APPROVED FIRE-EXTINGUISHING EQUIPMENT NEARBY.

N.T.S

