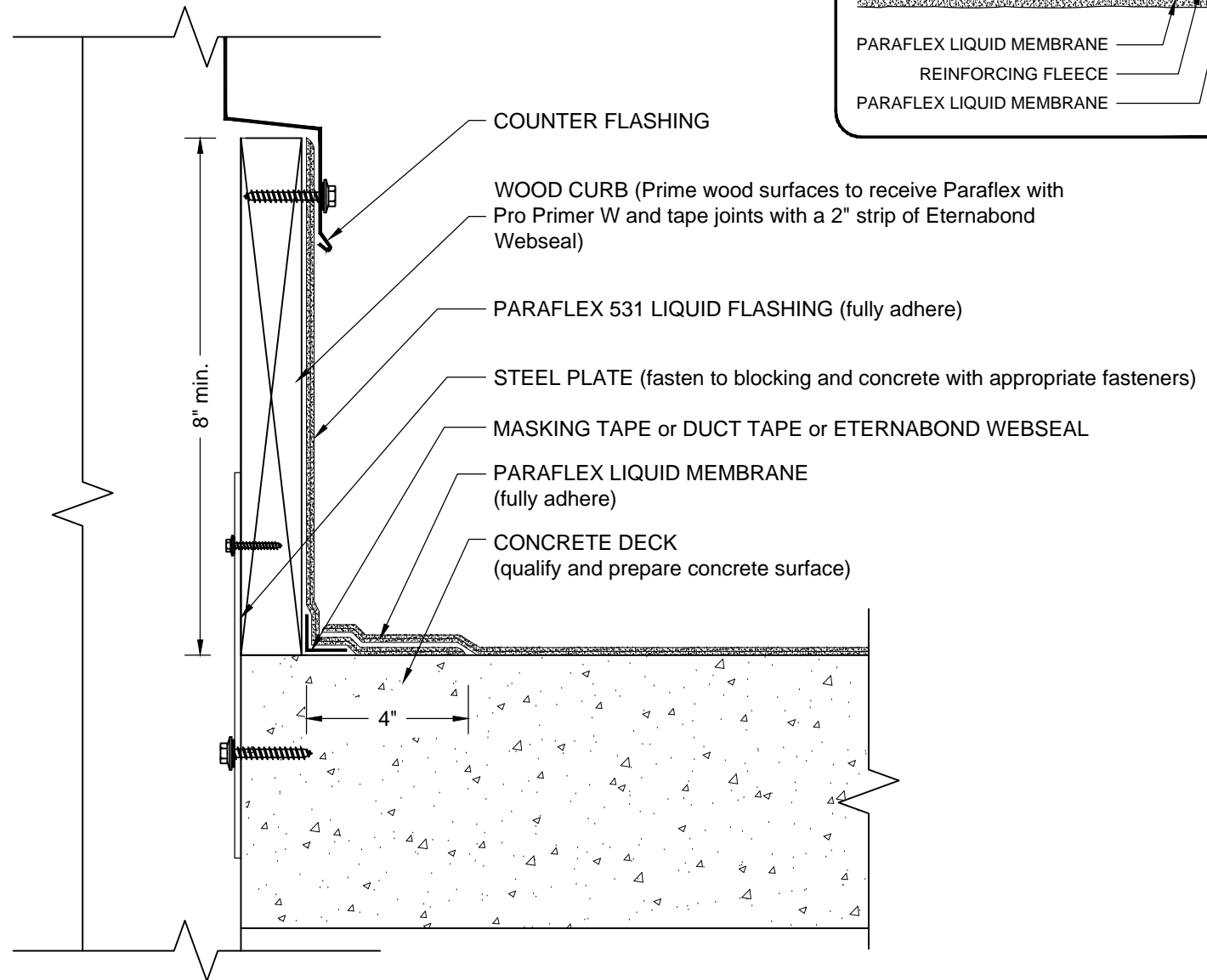


# CURB FLASHING (wood curb)

## PARAFLEX LIQUID MEMBRANE - CONCRETE SUBSTRATE



**NOTES:**

1. REFER TO SIPLAST PREPARATION GUIDELINES FOR PROPER SURFACE PREPARATION OF ALL SUBSTRATES PRIOR TO APPLICATION OF PARAFLEX MATERIALS.
2. REQUIREMENTS AND RECOMMENDATIONS DETAILED IN CURRENT SIPLAST SPECIFICATIONS AND THE PARAFLEX LIQUID MEMBRANE SYSTEM INSTALLER'S GUIDE SHALL APPLY IN ADDITION TO THE ABOVE DRAWING.

N.T.S