



Paraguard Raised Edge

ORDER/SPECIFICATION FORM

MODEL NUMBER

STANDARD FACE DIMENSIONS

PGE 600

PGE 750

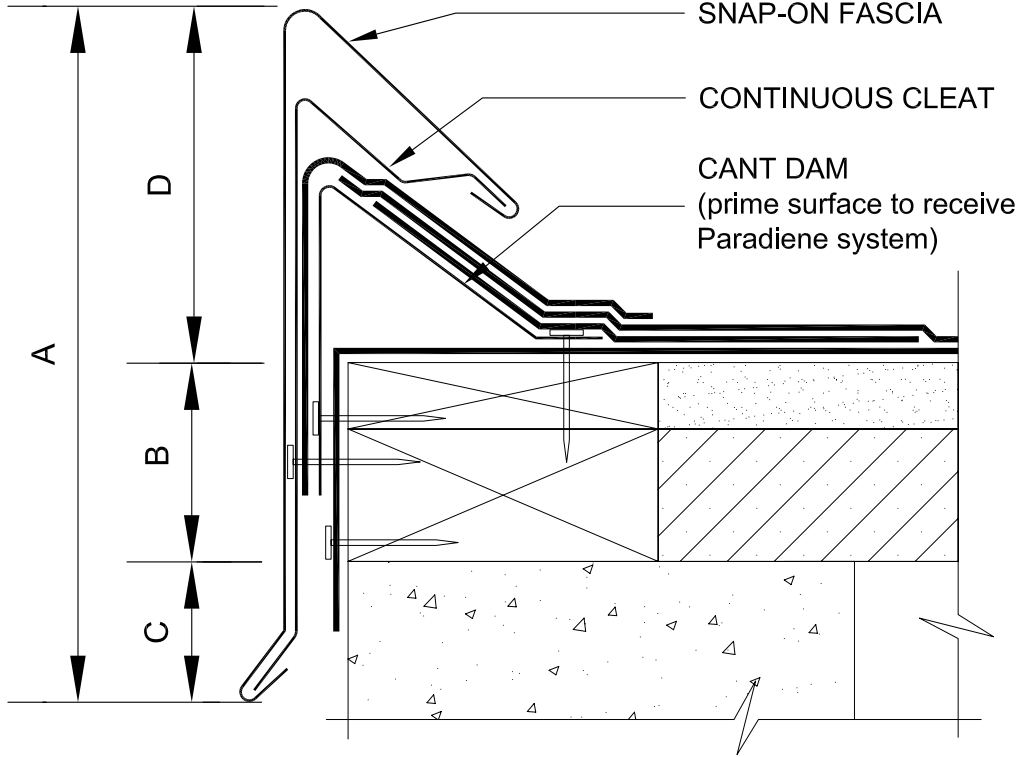
PGE 900

CUSTOM DIMENSIONS
(FOR NON-STANDARD SIZES)

A = _____

B = _____

C = _____



QUANTITY:

_____ FT. TOTAL PERIMETER

_____ PCS. STOCK @ 10'0"

_____ PCS STD. O.S. CORNER

_____ PCS STD. I.S. CORNER

_____ PCS TRANSITION
(attach sketch)

_____ PCS STD. SUMP PANS

_____ PCS STD. SPILLOUTS

Standard Sizes

Fascia Model	Fascia Face Height "A"		Max. Nailer Coverage "B"		Coverage Below Nailer "C"		Height Above Nailer "D"		Width "W"	
	in	mm	in	mm	in	mm	in	mm	in	mm
PGE 600	6	152	1½	38	1¾	44	2¾	70	2⅝	67
PGE 750	7½	190	3	76	1¾	44	2¾	70	2⅝	67
PGE 900	9	229	4½	114	1¾	44	2¾	70	2⅝	67

CAP MATERIAL

ALUMINUM

GALV. STEEL

STAIN. STEEL

THICKNESS

0.050"

0.063"

24 GAUGE

FINISH

COIL KYNAR

SPRAY KYNAR

MILL

CLEAR ANODIZED

BRONZE ANODIZED

BLACK ANODIZED

SIPLAST PARAGUARD COLOR: SP _____

JOB NAME: _____

JOB NO: _____

LOCATION: _____

SHIP TO ADDRESS: _____

CONTRACTOR APPROVAL:

APPROVED FOR FABRICATION

APPROVED WITH CHANGES

CONTRACTOR NAME

CONTRACTOR REPRESENTATIVE

DATE

CONTRACTOR SIGNATURE