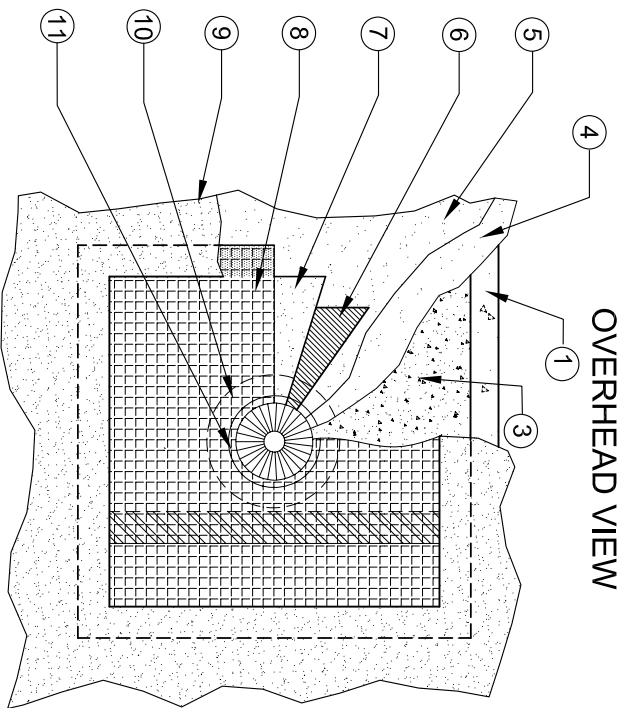
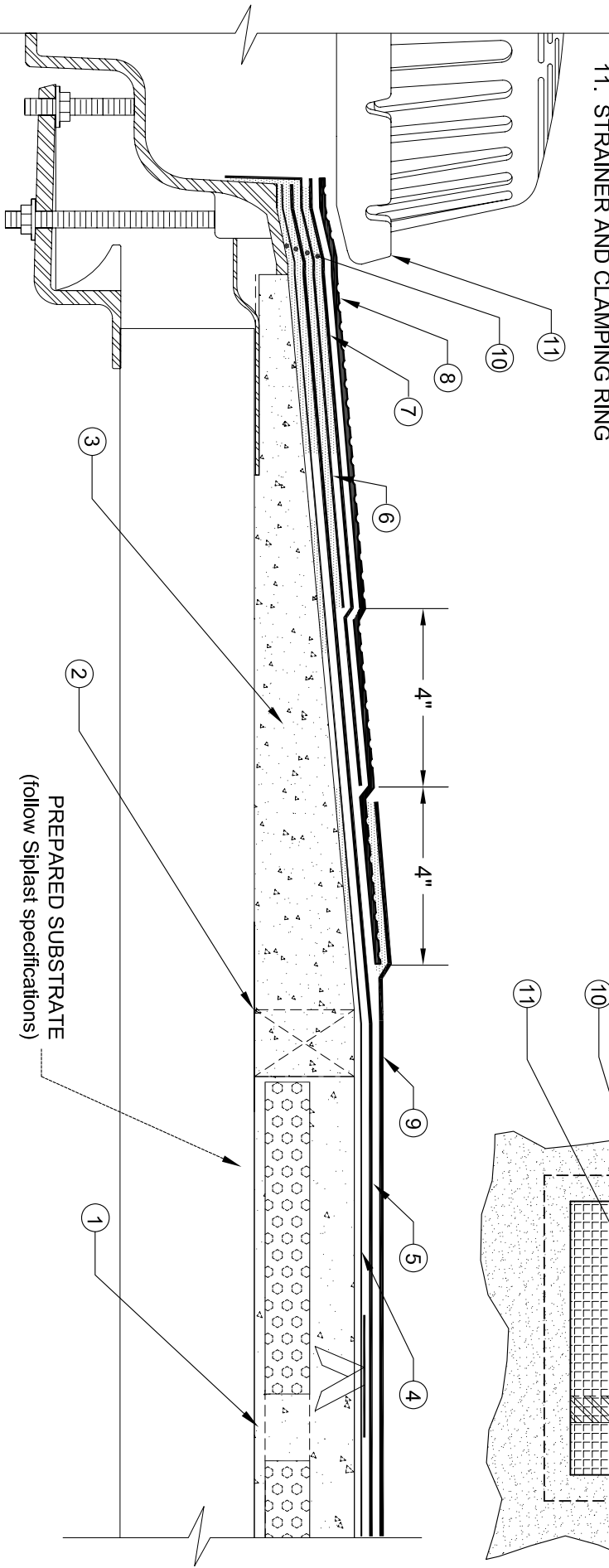


SUMPED ROOF DRAIN

1. NVS LIGHTWEIGHT INSULATING CONCRETE SYSTEM
2. WOOD BLOCKING (use as a pour-stop for the NVS System and remove prior to application of Zono-Patch)
3. ZONO-PATCH (apply in drain sump)
4. PARABASE FS (mechanically attach in field, spot bond using mastic in sump area)
5. PARADIENE 20 (fully adhere)
6. LEAD FLASHING (4 lb., 30" X 30" - prime and set in mastic)
7. PARADIENE 20 (39" X 39" - fully adhere; extend 4" beyond lead)
8. VERAL (48" X 48" - apply in SFT Cement, prime foil around edge min. 4")
9. PARADIENE 30 FR (fully adhere, set in mastic over Veral sheet)
10. MASTIC (set Paradiene layers in mastic 6" around drain perimeter)
11. STRAINER AND CLAMPING RING



OVERHEAD VIEW



PREPARED SUBSTRATE
(follow Siplast specifications)

NOTES: 1. PA-1021 PLASTIC CEMENT AND PA-1125 OR PA-917 LS PRIMER ARE REQUIRED WHERE MASTIC AND PRIMER ARE INDICATED.

2. ROOF DRAIN COMPONENTS AND INSTALLATION GUIDELINES ARE SUPPLIED BY THE DRAIN MANUFACTURER.
 3. VERAL ALUMINUM OR STAINLESS STEEL MUST BE USED IN DRAIN SUMP APPLICATIONS. LAP VERAL OUTSIDE OF DRAIN BOWL AREA.
 4. REQUIREMENTS AND RECOMMENDATIONS DETAILED IN SIPLAST MEMBRANE AND SRIS SPECIFICATIONS SHALL APPLY IN ADDITION TO THE ABOVE DRAWING.

CAUTION: SIPLAST RECOMMENDS THAT ALL PRACTICES PERTAINING TO NRCA CERTA GUIDELINES BE FOLLOWED WHEN TORCHING METHODS ARE EMPLOYED. THIS INCLUDES PERFORMING A FIRE WATCH FOLLOWING ANY TORCH APPLICATIONS. ALWAYS HAVE APPROVED FIRE-EXTINGUISHING EQUIPMENT NEARBY.

N.T.S.



Siplast - 1000 East Rochelle Boulevard - Irving, Texas - 75062-3940
 (800) 922-8800 FAX: (469) 995-2206 www.siplast.com

Ref. #: 2031nbD2
 Date: 10.20.08