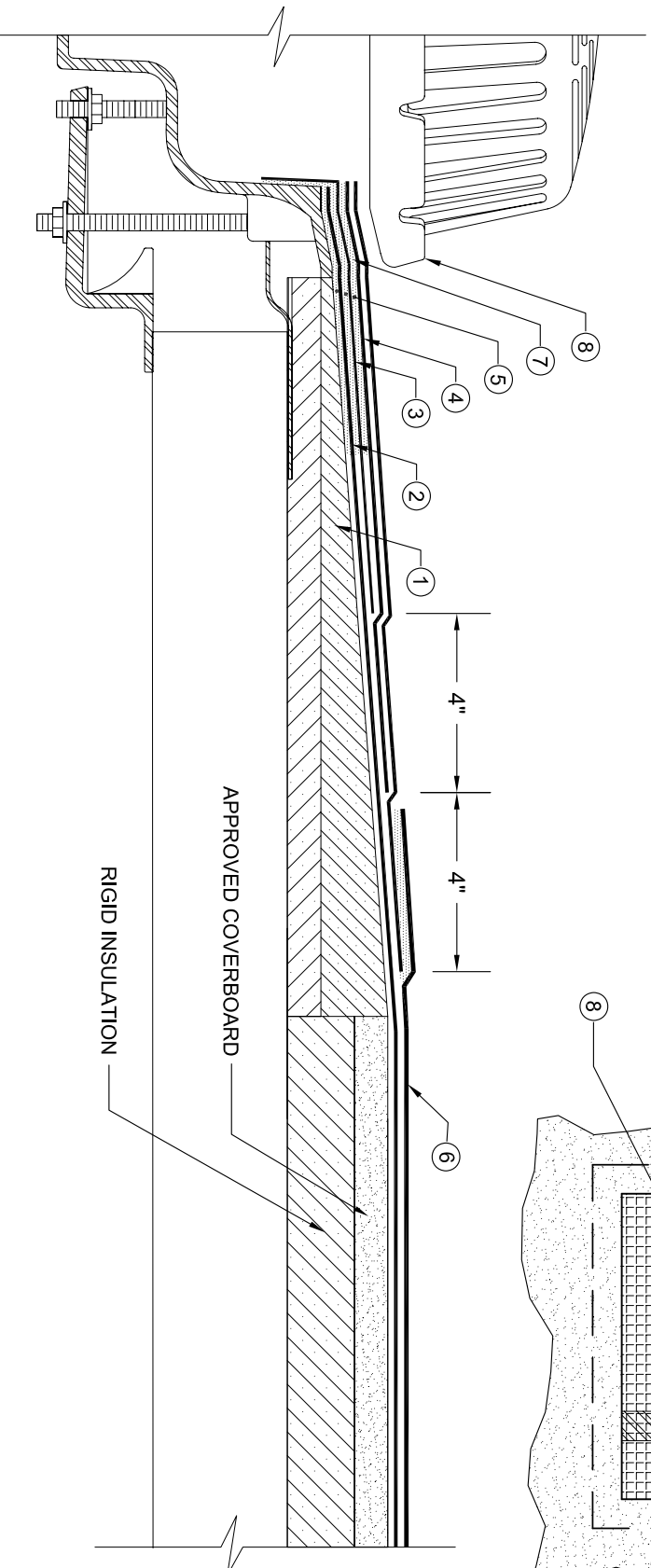
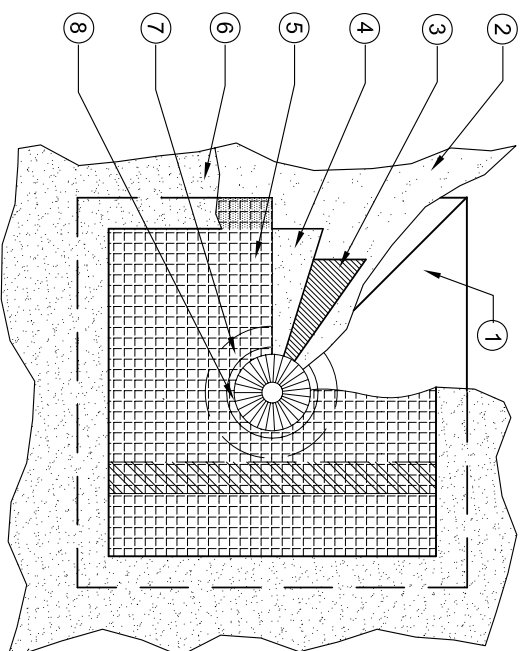


SUMPED ROOF DRAIN

OVERHEAD VIEW

1. TAPERED INSULATION IN DRAIN SUMP
2. PARADIENE 20 (fully adhere)
3. LEAD FLASHING (4 lb., 30" X 30" - prime and set in mastic)
4. PARADIENE 20 (39" X 39" - fully adhere, extend 4" beyond lead)
5. VERAL (torch to prepared surfaces)
6. PARADIENE 30 FR (fully adhere, set in mastic over Veral sheet)
7. MASTIC (shaded area, set Paradiene layers in mastic 6" around drain perimeter)
8. STRAINER AND CLAMPING RING



- NOTES:
1. PA-1021 PLASTIC CEMENT AND PA-1125 PRIMER ARE REQUIRED WHERE MASTIC AND PRIMER ARE INDICATED.
 2. ROOF DRAIN COMPONENTS AND INSTALLATION GUIDELINES ARE SUPPLIED BY THE DRAIN MANUFACTURER.
 3. VERAL ALUMINUM OR STAINLESS STEEL MUST BE USED IN DRAIN SUMP APPLICATIONS.
 4. REQUIREMENTS AND RECOMMENDATIONS DETAILED IN SIPLAST SPECIFICATIONS SHALL APPLY IN ADDITION TO THE ABOVE DRAWING.

CAUTION: SIPLAST RECOMMENDS THAT ALL PRACTICES PERTAINING TO NRCA CERTA GUIDELINES BE FOLLOWED WHEN TORCHING METHODS ARE EMPLOYED. THIS INCLUDES PERFORMING A FIRE WATCH FOLLOWING ANY TORCH APPLICATIONS. ALWAYS HAVE APPROVED FIRE-EXTINGUISHING EQUIPMENT NEARBY.

N.T.S.



Siplast - 1000 East Rochelle Boulevard - Irving, Texas - 75062-3940
 (800) 922-8800 FAX: (469) 995-2206 www.siplast.com

Ref. #: 2031gid2
 Date 10.17.08