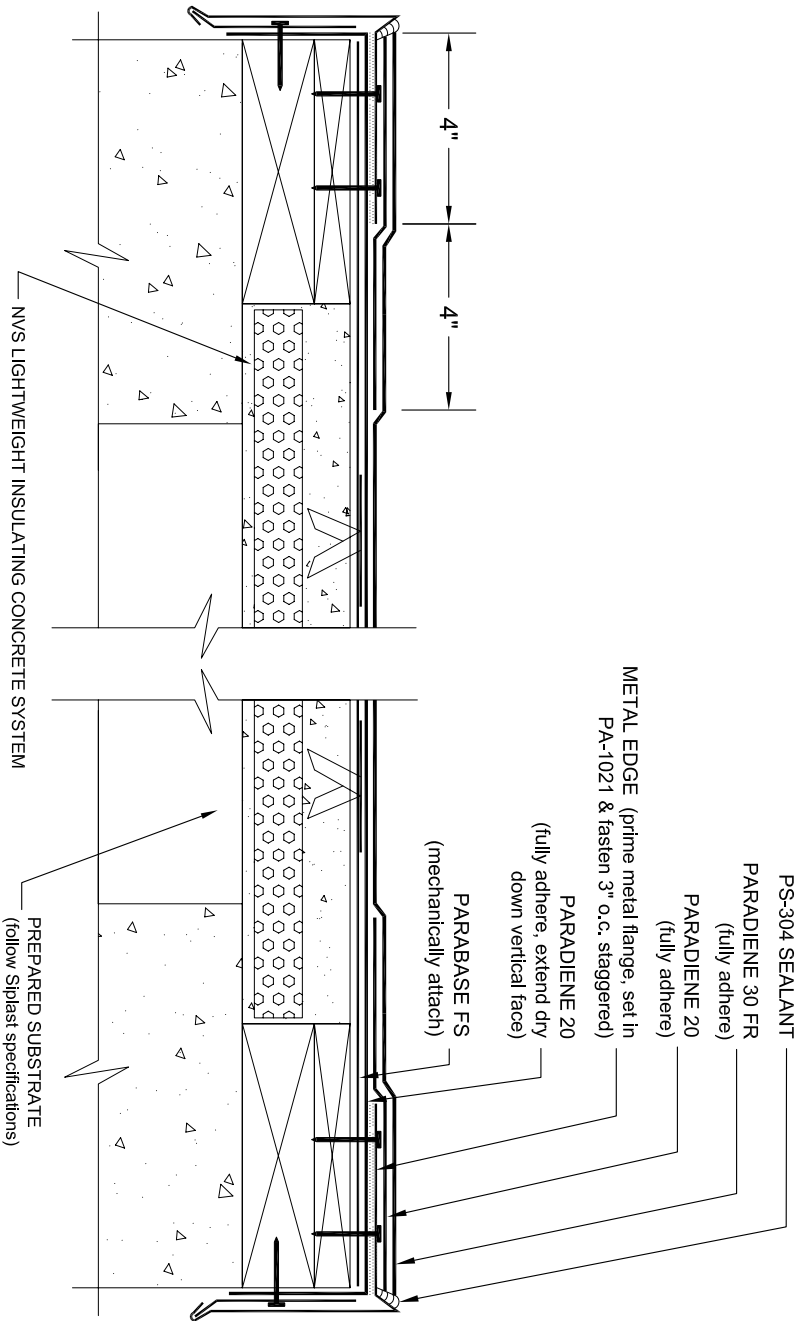


# ROOF EDGE



- NOTES: 1. PA-1021 PLASTIC CEMENT AND PA-1125 OR PA-917 LS PRIMER ARE REQUIRED WHERE MASTIC AND PRIMER ARE INDICATED.  
 2. THE CARPENTRY AND METAL WORK SHOWN DEPICT SHOP FABRICATION AND JOB-SITE ASSEMBLY. THESE COMPONENTS SHOULD BE DESIGNED/ FABRICATED/INSTALLED ACCORDING TO GENERALLY ACCEPTED INDUSTRY PRACTICES, STANDARDS, AND APPROVALS.  
 3. DISSIMILAR METAL TYPES SUBJECT TO ELECTROLYTIC REACTION SHOULD BE PHYSICALLY SEPARATED.  
 4. REQUIREMENTS AND RECOMMENDATIONS DETAILED IN SIPLEST MEMBRANE & SRS SPECIFICATIONS SHALL APPLY IN ADDITION TO THE ABOVE DRAWING.

CAUTION: SIPLEST RECOMMENDS THAT ALL PRACTICES PERTAINING TO NRCA CERTA GUIDELINES BE FOLLOWED WHEN TORCHING METHODS ARE EMPLOYED. THIS INCLUDES PERFORMING A FIRE WATCH FOLLOWING ANY TORCH APPLICATIONS. ALWAYS HAVE APPROVED FIRE-EXTINGUISHING EQUIPMENT NEARBY.

N.T.S.



Siplast - 1000 East Rochelle Boulevard - Irving, Texas - 75062-3940  
 (800) 922-8800 FAX: (469) 995-2206 www.siplast.com

Ref. #: 2031nbE1  
 Date: 10.21.08