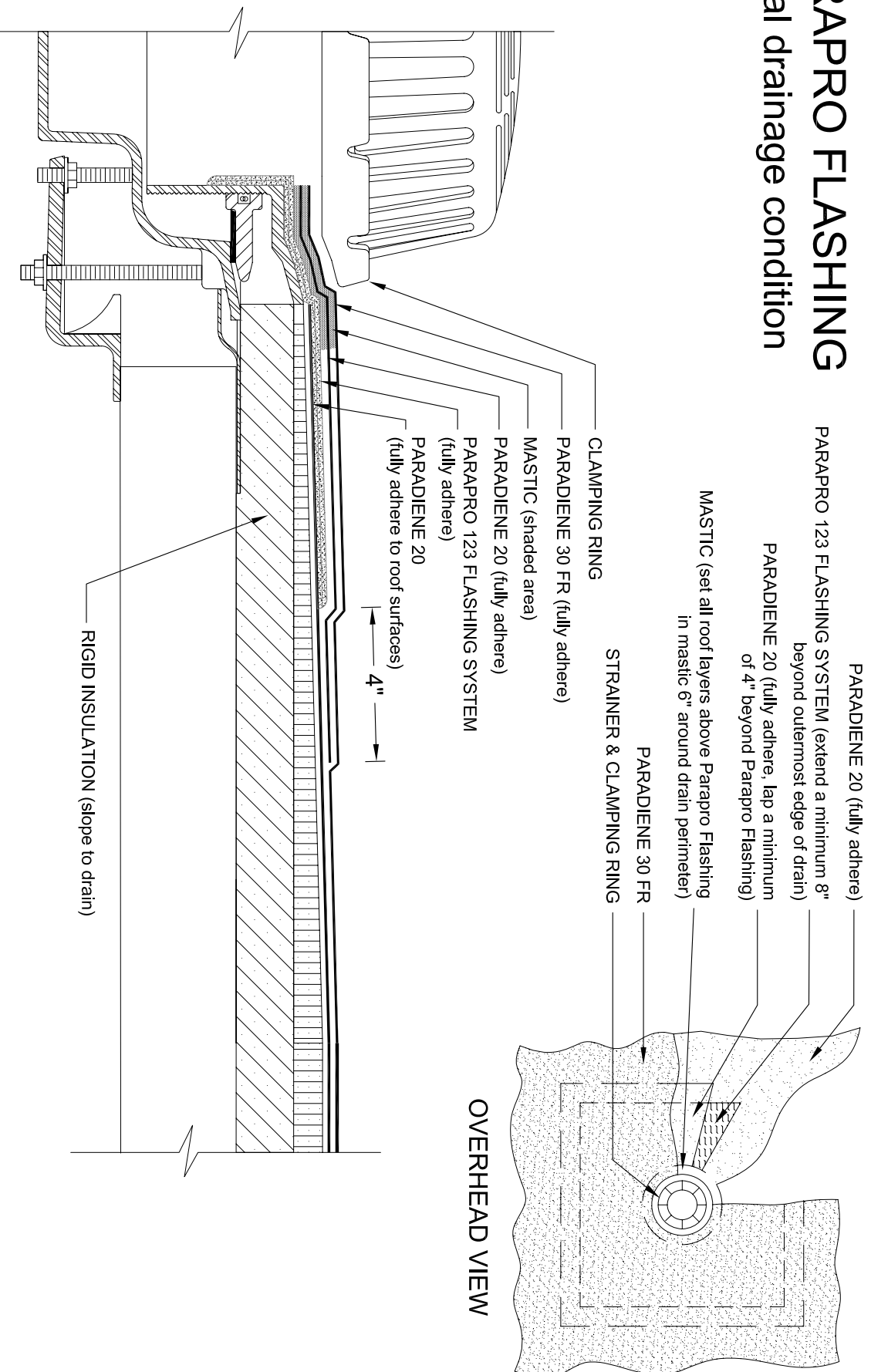


# PARAPRO FLASHING

## typical drainage condition



- NOTES:
1. PA-1021 PLASTIC CEMENT IS REQUIRED WHERE MASTIC IS INDICATED.
  2. ROOF DRAIN COMPONENTS AND INSTALLATION GUIDELINES ARE SUPPLIED BY THE DRAIN MANUFACTURER.
  3. REFER TO Siplast PREPARATION GUIDELINES FOR PROPER SURFACE TREATMENT OF ALL MATERIALS PRIOR TO APPLICATION OF PARAPRO FLASHING.
  4. PARAPRO CANNOT BE APPLIED OVER MEMBRANES OR OTHER PRODUCTS CONTAINING UNCURED, SOLVENT-BASED MATERIALS. IN SUCH CASES, MEMBRANES TO BE COVERED WITH PARAPRO MUST BE ADHERED WITH SFT ADHESIVE OR PS-304 ELASTOMERIC SEALANT. CONTACT Siplast FOR FURTHER INFORMATION.
  5. REQUIREMENTS AND RECOMMENDATIONS DETAILED IN THE CURRENT Siplast SPECIFICATIONS AND PARAPRO INSTALLER'S GUIDE SHALL APPLY IN ADDITION TO THE ABOVE DRAWING.
  6. REFER TO Siplast FLEECE CUTTING RECOMMENDATIONS FOR CONFIGURATIONS, CUTTING, FOLDING, AND LAPPING TECHNIQUES.

N.T.S.



Siplast - 1000 East Rochelle Boulevard - Irving, Texas - 75062-3940  
 (800) 922-8800 FAX: (469) 995-2206 www.siplast.com

Ref. #: 2031gid9  
 Date: 10.17.08